

WinAlign® HD Alignment Systems

Fast and accurate wheel alignment for multi-axle trucks

NEW!



New DSP760T alignment sensors

Hunter's new DSP760T heavy-duty alignment sensors reduce setup time and provide accurate alignment readings.

PATENTED

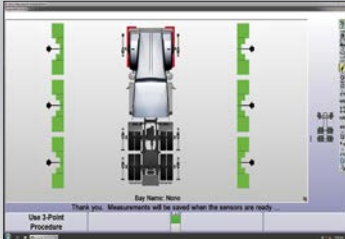
Rolling Compensation



- ✓ No jacking required
- ✓ Compensate all sensors at once
- ✓ Short roll comp

PAT. PENDING

Six Sensors Live



- ✓ Three axles live
 - ✓ See all measurements at once
 - ✓ Diagnose tire wear conditions
- ✓ Reduce setup time through minimal sensor movement

PAT. PENDING

Truck Pusher



- ✓ Easily move vehicle for rolling comp
- ✓ Rechargeable battery
- ✓ Doubles as a wheel chock

PATENTED

Fully Integrated Alignment



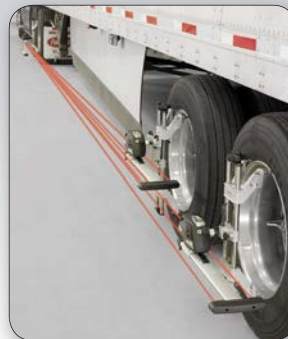
- ✓ Auto-locking turnplates
- ✓ Built-in turnplate bridges for rolling comp





PAT. PENDING

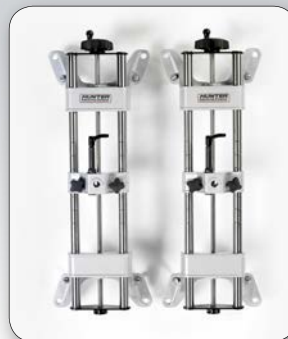
Trailer Alignment



- ✓ Align without unhooking from tractor
- ✓ Align using optional kingpin adaptor without tractor
- ✓ Accurate to 600 inches

STANDARD

Self-Centering Adaptors



- ✓ High versatility for trucks and buses with low-hanging bumpers or air dams
- ✓ Fits wheels 15 to 28 inches in diameter

STANDARD

Cordless Operation



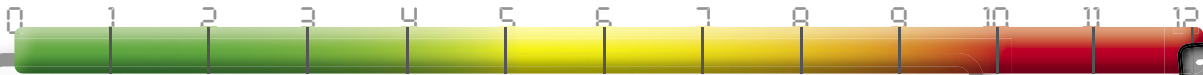
- ✓ No cumbersome cables
- ✓ Hot-swappable batteries

Rugged



- ✓ Integrated electronic components enhance reliability
- ✓ Lightweight, rubberized design
- ✓ Impact-prone areas protected by integrated rubber bumpers

Previous setups used valuable shop time...



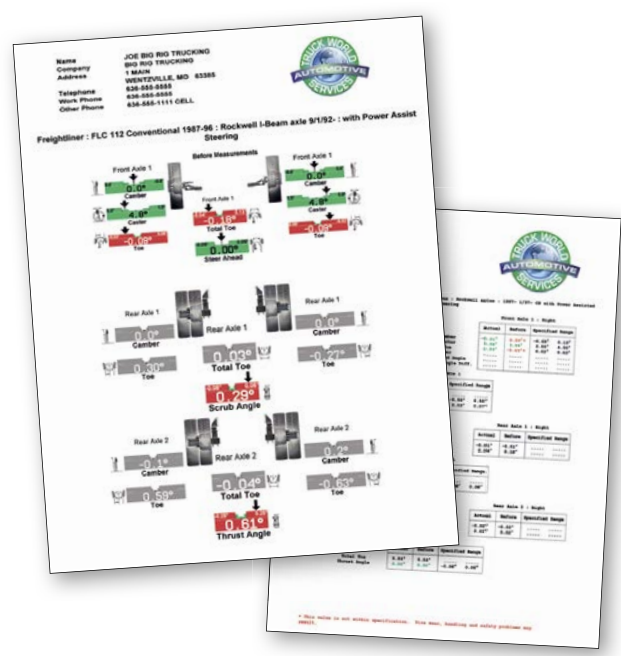
12:00+



Standard procedures

- ✓ Position vehicle
- ✓ Select vehicle type
- ✓ Jack front axle
- ✓ Mount front sensors
- ✓ Compensate each sensor
- ✓ Pull turnplate pins
- ✓ Lower front axle
- ✓ Jack rear axle
- ✓ Mount rear sensors
- ✓ Compensate each sensor
- ✓ Lower rear axle
- ✓ Steer caster
- ✓ Jack middle axle
- ✓ Move fronts to middle
- ✓ Compensate each sensor
- ✓ Lower middle axle
- ✓ Print results

12:00-15:00 Total



ACTIVITY TRACKER

| | |
|-----|--|
| 3 | |
| 2 | |
| 203 | |
| 8+ | |

- axles jacked to compensate
- sensor movements
- total walking steps
- additional minutes required before adjustment

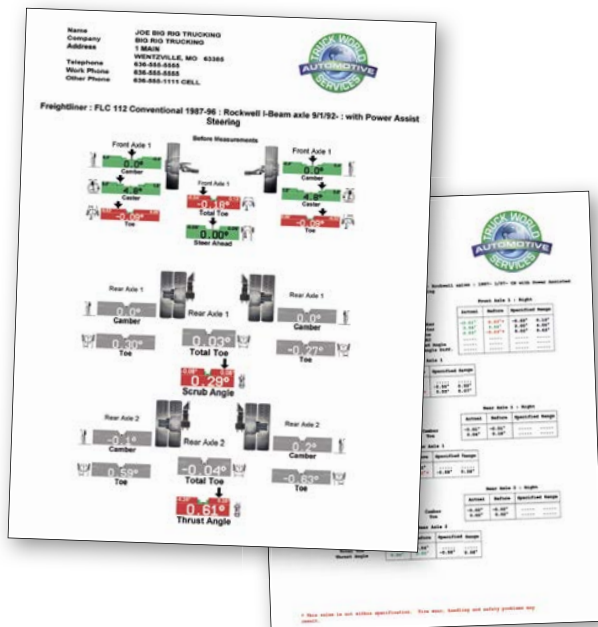
...Today, present your results in just 4 minutes!



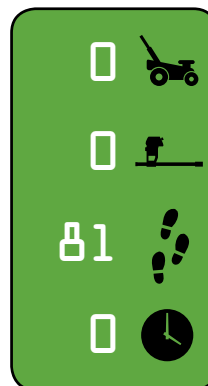
New procedure

- ✓ Position vehicle
- ✓ Select vehicle
- ✓ Mount sensors
- ✓ Roll forward to compensate
- ✓ Steer caster
- ✓ Print results

4:00 Total



ACTIVITY TRACKER



0 axles jacked to compensate

0 sensor movements

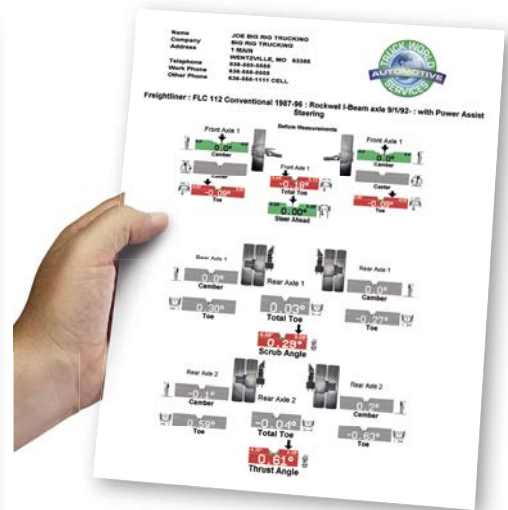
01 total walking steps

0 additional minutes required before adjustment

Fast printouts in 4 minutes!

Use detailed printouts featuring your company's logo to sell more work.

Check tire wear angles in under 3 minutes!



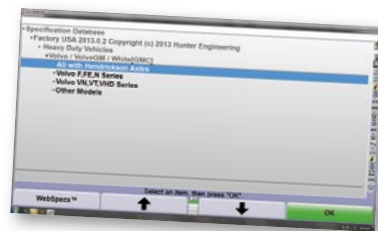
Use detailed printouts featuring your company's logo to sell more work

- ✓ Get measurements on three axles
- ✓ Toe and camber on front axle
- ✓ Thrust and scrub on rear axles

Step-by-step procedure for HD alignment checks



1. Pull in vehicle



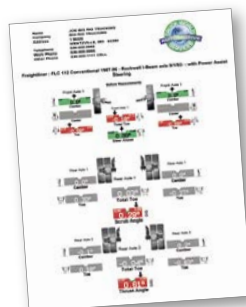
2. Recall the specs



3. Mount six sensors



4. Roll vehicle forward



5. Retrieve the printout



6. Sell the service

Accessories

PAT. PENDING



Truck Pusher*

Hunter's battery operated pusher easily moves the vehicle for accurate rolling compensation. (20-2855-1)

PATENTED



Turnplates

Optional HD PowerSlide turnplates automatically lock and unlock and allow garages to align heavy-duty vehicles on the floor or with a truck rack. (Floor: 20-2876-1, Rack: 20-2875-1)

STANDARD

OPTIONAL



Self-centering wheel clamps

Standard wheel clamps allow clamping of wheels 15-28" in diameter. Optional mini clamps allow for mounting sensor to hub center of front rims (2 required) (175-284-1).

OPTIONAL

OPTIONAL



Sensor storage options

Sensor storage post (left) or cart (right) provides convenient access to alignment instruments when you need them and convenient storage when you don't. (Post: 20-2886-1, Cart: 20-2850-1)

OPTIONAL



Remote indicator

Remote indicator is designed to provide the operator with complete control while making adjustments to the vehicle. (Cordless: 20-2882-1)

OPTIONAL



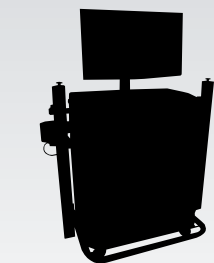
Trailer gauge

Trailer alignment gauge tool mounts sensors to the trailer kingpin. Trailer axles are adjusted to centerline. (221-738-1)

* Standard with WT400

When it comes to heavy-duty software, WinAlign® HD is unmatched!

The importance of software...



Ordinary systems simply present alignment readings



WinAlign HD maximizes profit and productivity

- ▶ The **most extensive** vehicle information database.
- ▶ **Vehicle-specific** procedures guide your technicians with step-by-step instructions.
- ▶ **Patented power tools** complete the work accurately the first time, every time.
- ▶ **WinAlign HD maximizes profit and productivity** in your alignment bay.

PATENTED

| | Left | Right |
|--------------------|--------|-------|
| Cross Camber | 0.2° | 0.0° |
| Caster | 3.5° | 0.2° |
| Cross Caster | 0.0° | 3.5° |
| Total Toe | -0.10° | 0.0° |
| Rear Axle 1 | | |
| Camber | 0.0° | 0.0° |
| Cross Camber | 0.0° | 0.0° |
| Total Toe | 0.00° | 0.00° |
| Scrub Angle | 0.00° | 0.00° |
| Rear Axle 2 | | |
| Camber | 0.0° | 0.0° |
| Cross Camber | 0.0° | 0.0° |
| Total Toe | 0.00° | 0.00° |
| Thrust Angle | 0.00° | 0.00° |

Show Bar Graphs Show Secondary Measurements

ExpressAlign®

Perform every alignment with a streamlined procedure. ExpressAlign analyzes each job and presents the optimal action sequence with the minimum steps required.

Vehicle Selection

- Car / Light Truck: 1 Front, 1 Rear
- Truck/Tractor: 1 Front, 1 Rear
- Truck/Tractor: 1 Front, 2 Rear
- First Rear Reference
- Last Rear Reference
- Truck/Tractor: 1 Front, 3 Rear
- Truck/Tractor: 2 Front, 1 Rear
- Truck/Tractor: 2 Front, 2 Rear
- Truck/Tractor: 2 Front, 3 Rear
- Truck: 1 Front, 3 Rear, Rear Axle 1 Steer
- Truck: 1 Front, 4 Rear, Rear Axle 1,2 Steer
- Truck: 1 Front, 4 Rear, Rear Axle 4 Steer
- Truck: 1 Front, 5 Rear, Rear Axle 1-2-3 Steer
- Truck: 1 Front, 6 Rear, Rear Axle 1-2-3-4 Steer
- Truck: 2 Front, 3 Rear, Rear Axle 3 Steer
- Bus: 1 Front, 1 Rear

60+ Axle configurations possible

WinAlign HD software supports more than 60 customized truck, trailer and bus alignment procedures as well as passenger car and light truck alignment.

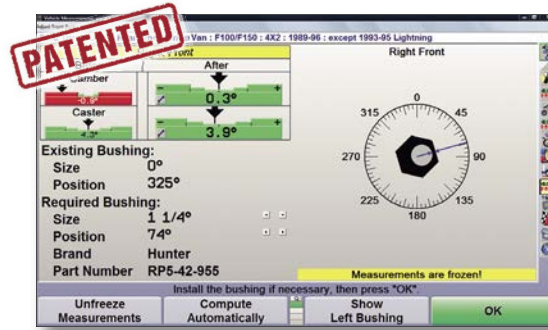
Additional power features for light-vehicle work includes:

- CAMM® feature • Tools and Kits database • Digital photos/videos* •
- ExpressAlign® procedure • Shim Select® II feature • Work Management features



WinToe®

Ensure a straight steering wheel every time without repeated adjustments or using a steering wheel holder. Works with all vehicles on the road today, from cars to Freightliners.



Automatic Bushing Calculator®

Calculate the proper bushing size and position adjustment without wasting time with a zero bushing. Eases the process of servicing Ford F-150-450's.



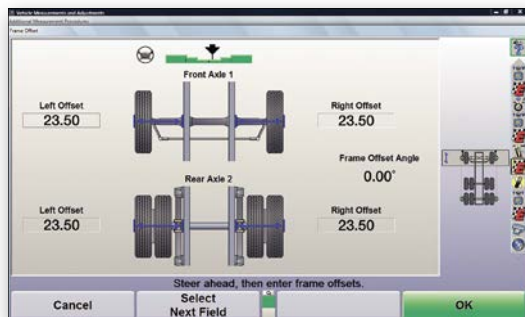
Rear Axle Adjustment Calculations

Cut adjustment times in half for rear axle corrections. Graphics let you get it right on the first try.



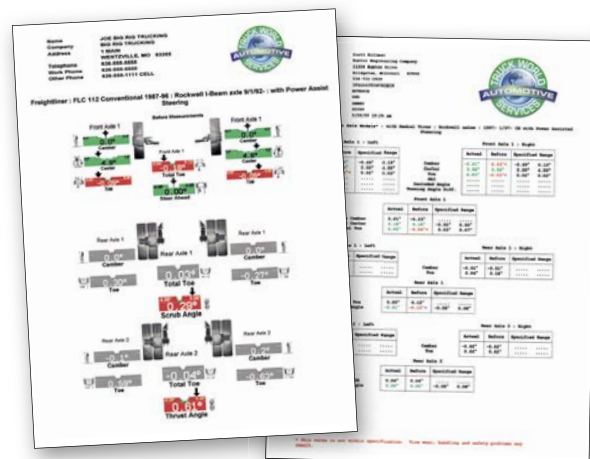
Adjustment Videos

Strengthen technician competency and extend profit opportunities with helpful adjustment videos.



Frame Offset Angle Display

Measure frame offset angle and calculate adjustments to frame centerline, if a frame reference alignment is needed.



Before and after alignment results can be printed in color.

Console configurations

| | WinAlign WT400 Premium | WinAlign WT300 Standard | |
|--|---|-------------------------|----------|
| Industry-leading hardware and software | Intel Core i3 Processor 3.06 GHz (or greater) | ✓ | ✓ |
| | 4 GB of DDR3 SDRAM Memory | ✓ | ✓ |
| | 120 GB SSD hard drive (or greater) | ✓ | ✓ |
| | DVD-RW/CD-RW drive | ✓ | ✓ |
| | Windows® 7 operating system | ✓ | ✓ |
| | Car and light truck software* | ✓ | ✓ |
| | 2 years of free VID updates | ✓ | ✓ |
| | 2 years of free HunterNet access | ✓ | ✓ |
| | Wireless network module | ✓ | Optional |
| | AlignGuide training | ✓ | Optional |
| | DSP760T support | ✓ | Optional |
| | Rolling compensation | ✓ | Optional |
| | Truck Pusher | ✓ | Optional |



Premium



Standard

* Car alignment sensors required.

DSP700T sensor features

| | DSP760T | DSP740T |
|------------------------------------|---------|---------|
| Axles live | 3 | 2 |
| High-speed wireless communication | ✓ | ✓ |
| Pro-Comp® continuous compensation | ✓ | ✓ |
| Rolling compensation option** | ✓ | ✓ |
| Level Reminder® on-screen leveling | ✓ | ✓ |
| Sensor locking mechanism | ✓ | ✓ |
| Interrupted measurement retention | ✓ | ✓ |
| Light-weight construction | ✓ | ✓ |



DSP760T



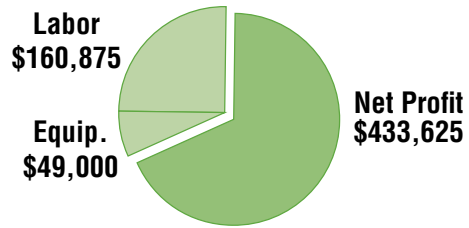
DSP740T

** Requires WT400 console.

Return on investment

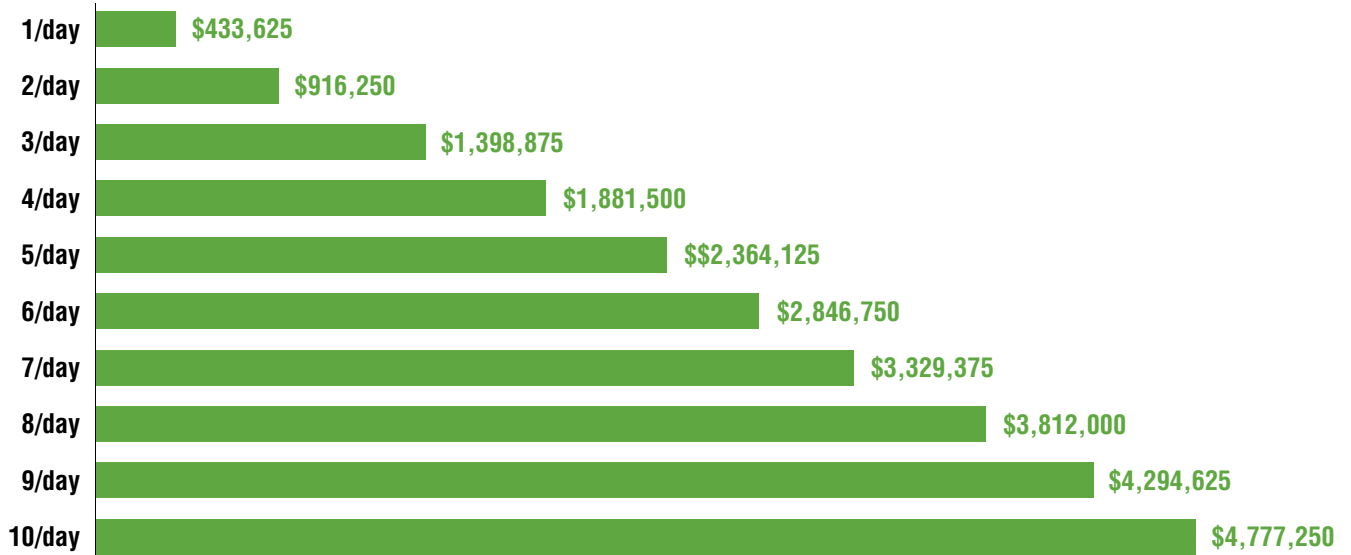
HD wheel alignment profitability

Cash Investment - 1/day



| Cash Purchase | | Alignments per period | | | |
|--|-----------------|-----------------------|-------------------|---------------------|--------------------|
| Work week (days) | 5.5 | 1 Per day | = 24 Per month | = 286 First year | = 2,860 10 year |
| Alignment RO Total (\$225 per align) | \$225 | \$225 | \$5,358 | \$64,350 | \$643,500 |
| Cost of labor & parts | -25% | -\$56 | -\$1,340 | -\$16,088 | -\$160,875 |
| Gross Profit | \$168.75 | \$169 | \$4,019 | \$48,263 | \$482,625 |
| Total investment (7 year depreciation) | \$49,000 | -\$24 | -\$583 | -\$7,000 | -\$49,000 |
| Net Profit | \$144.26 | \$144 | \$3,435 | \$41,834 | \$433,625 |
| Alignments per month to break even | 3.5 | 340 days | 14.3 months | 1.2 years | |
| Full Equipment Payback | | | | | |

Ten-year return on a \$49,000 investment

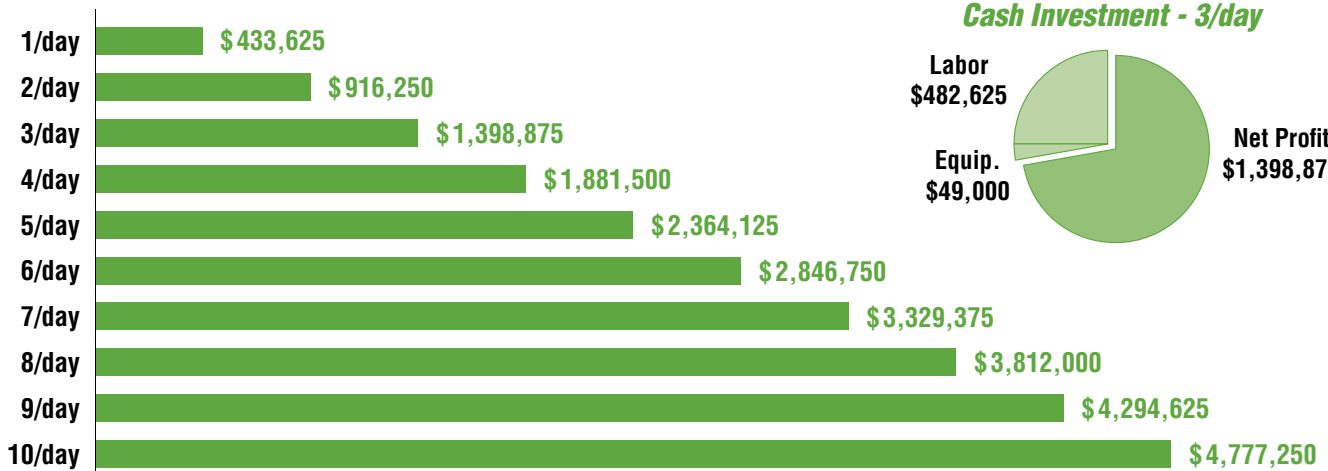


Return on investment

HD Quick Check wheel alignment profitability

| Cash Purchase | | Alignments per period | | | |
|---|------------------|------------------------------|------------------|-------------------|---------------------|
| Work week (days) | 5.5 | | | | |
| Alignments per day (Core Business) | 1 | | | | |
| # Non Alignment Traffic per day | 10 | | | | |
| # Trucks Needing Alignment: 70% (Ind. Avg.) | 7 | | | | |
| Add'l Alignments Sold: 25% (or more) | +2 | | | | |
| Total Alignments per day: | | 3 | = 71 | = 858 | = 8,580 |
| | | Per day | Per month | First year | 10 year |
| Alignment charge | \$ 225 | \$ 675 | \$ 16,075 | \$ 193,050 | \$ 1,930,500 |
| Alignment add'l charges (Ind. Avg.) | \$ 0 | \$ 0 | \$ 0 | \$ 0 | \$ 0 |
| Alignment RO Total | \$ 225 | \$ 675 | \$ 16,075 | \$ 193,050 | \$ 1,930,500 |
| Cost of labor & parts | -25% | -\$ 169 | -\$ 4,019 | -\$ 48,263 | -\$ 482,625 |
| Gross Profit | \$ 168.75 | \$ 506 | \$ 12,056 | \$ 144,788 | \$ 1,447,875 |
| Total investment (7 year depreciation) | \$ 49,000 | -\$ 24 | -\$ 583 | -\$ 7,000 | -\$ 49,000 |
| Net Profit | \$ 160.59 | \$ 482 | \$ 11,473 | \$ 137,788 | \$ 1,398,875 |
| Alignments per month to break even | 3.5 | 102 | 4.3 | 0.4 | |
| Full Equipment Payback | | days | months | years | |

Ten-year return on a \$49,000 investment



Contact your Field Service Engineer or
Rotunda Area Sales Manager
www.OneRotunda.com
1.800.ROTUNDA



1215UAP5M.62