

HawkEye Elite[®] Alignment Systems

Greater profit and productivity through innovation



HUNTER
Engineering Company

Hunter's latest productivity features!

PATENTED



Revolutionary adaptor design!

- ▶ *Faster setups!*
- ▶ *No metal-to-metal contact!*
- ▶ *No knob twisting!*

PATENTED



Superior target design!

- ▶ *Lighter design!*
- ▶ *Narrower profile!*
- ▶ *Faster readings!*

HawkEye

Elite





Faster Caster!

Saves time, increases speed and reduces battery drain from brake light draw.



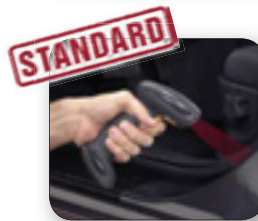
High-resolution cameras!

Four high-resolution cameras provide alignment measurements with pinpoint accuracy.



Recall specs in a snap!

Recall OE specs and vehicle-specific alignment procedures instantly.**



Patented steering system reset integration!

Reset computerized steering systems on a wide variety of vehicles with one simple tool.



EXCLUSIVE

QuickComp™!

Compensate all wheels and capture initial measurements in one motion.



EXCLUSIVE

New console design!

Integrated storage and charging for popular accessories.* †



* Available only on mobile WA400 consoles.

** Standard with WA400 consoles, optional with WA300 consoles.

† Remote Indicator sold separately.

New QuickGrip™ wheel adaptors & three-dimensional

Hunter's patented QuickGrip™ adaptors and three-dimensional targets accelerate service with set-up times in seconds instead of minutes...

HawkEye
Elite

Extremely Fast Installation



- ✓ Spring-loaded arms grip the tire
- ✓ Thumb switch secures the clamp
- ✓ Off-center clamping has no effect on accuracy

Avoid Damage to Expensive Rims



- ✓ Grips tire, not rim
- ✓ No metal-to-metal contact
- ✓ Only protective ring contacts rim

Less Weight



- ✓ Weighs only 6 lbs.
- ✓ Nearly 50% lighter than previous designs

Space-Efficient Profile



- ✓ Approx. 9" profile
- ✓ Easy to work around
- ✓ Great for narrow bays



targets



PATENTED



Quick-Change Arms



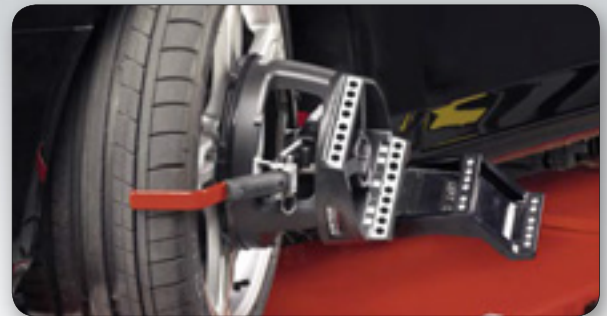
- ✓ Interchangeable arms cover up to 37" assemblies
- ✓ One arm fits approximately 90% of applications

Deep-Wheel Extension



- ✓ Deep rims or protruding hubs, no problem
- ✓ Standard accessory

Wide-Angle Targets



- ✓ Perform max steer procedure, as needed
- ✓ Standard accessory

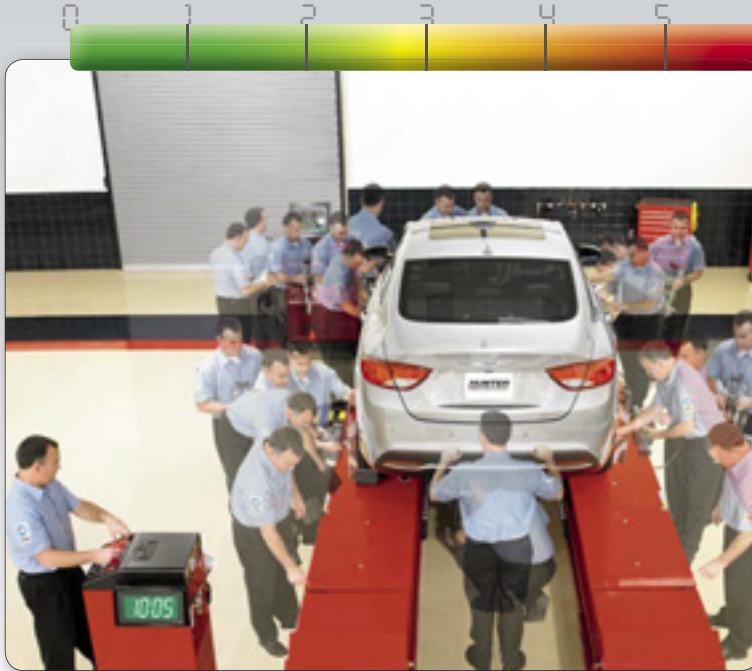
Low Maintenance



- ✓ Shop-tough polymer structure withstands drops
- ✓ No electronics, cables or calibration
- ✓ Only occasional cleaning required

Previous setups used valuable shop time...

Conventional electronic-sensor system – 10-minute-plus procedure

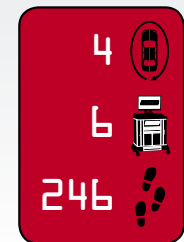


- ✓ Chock wheels and lift vehicle
- ✓ Jack up front and rear of vehicle
- ✓ Check air pressure and recall specs
- ✓ Mount all 4 sensors, compensate each sensor, and remove pins
- ✓ Lower rear and front of vehicle and jounce
- ✓ Steer caster
- ✓ Print results

10:05 Total

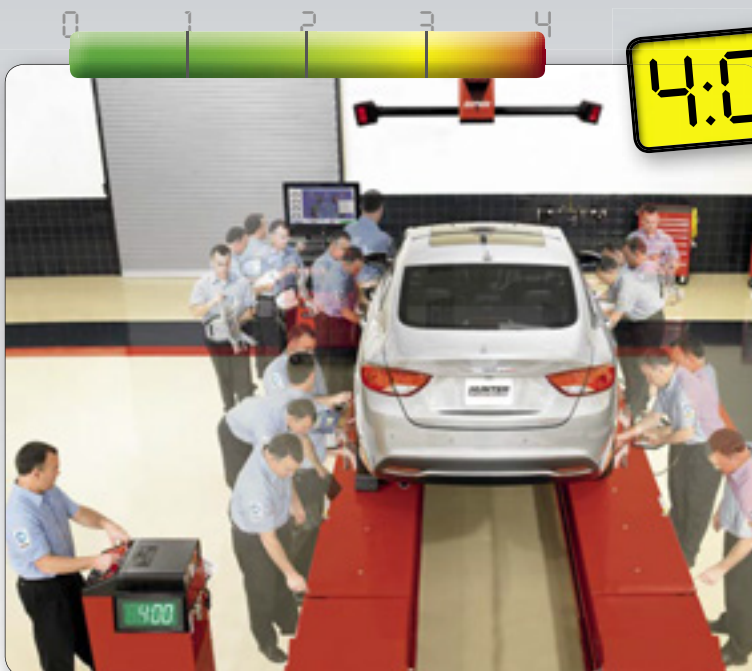
10:00

ACTIVITY TRACKER



Older technology requires long set-up times...

Camera-sensor systems speed up the process

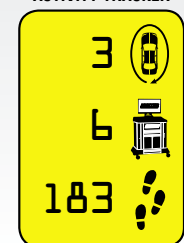


- ✓ Chock wheels and lift vehicle
- ✓ Check air pressure and recall specs
- ✓ Mount targets
- ✓ Roll backward, then forward to compensate
- ✓ Remove pins
- ✓ Steer caster
- ✓ Print results

4:00 Total

4:00

ACTIVITY TRACKER



Early camera technology improved efficiency...

...Today, present your results in just 70 seconds!



Hunter's HawkEye Elite® and Premium RX Lift capture all readings and produce measurements in 70 seconds!

Hunter's 70-second procedure

- ✓ Chock wheels and raise lift to work height
- ✓ Mount targets and set air pressure
- ✓ Roll forward to compensate sensors
- ✓ Scan VIN to recall specs and perform faster caster steer
- ✓ Vehicle results print automatically

1:10 Total

ACTIVITY TRACKER

1	
0	
72	

- trip around the vehicle
- trips to the console
- total walking steps



Fast printouts in 70 seconds!

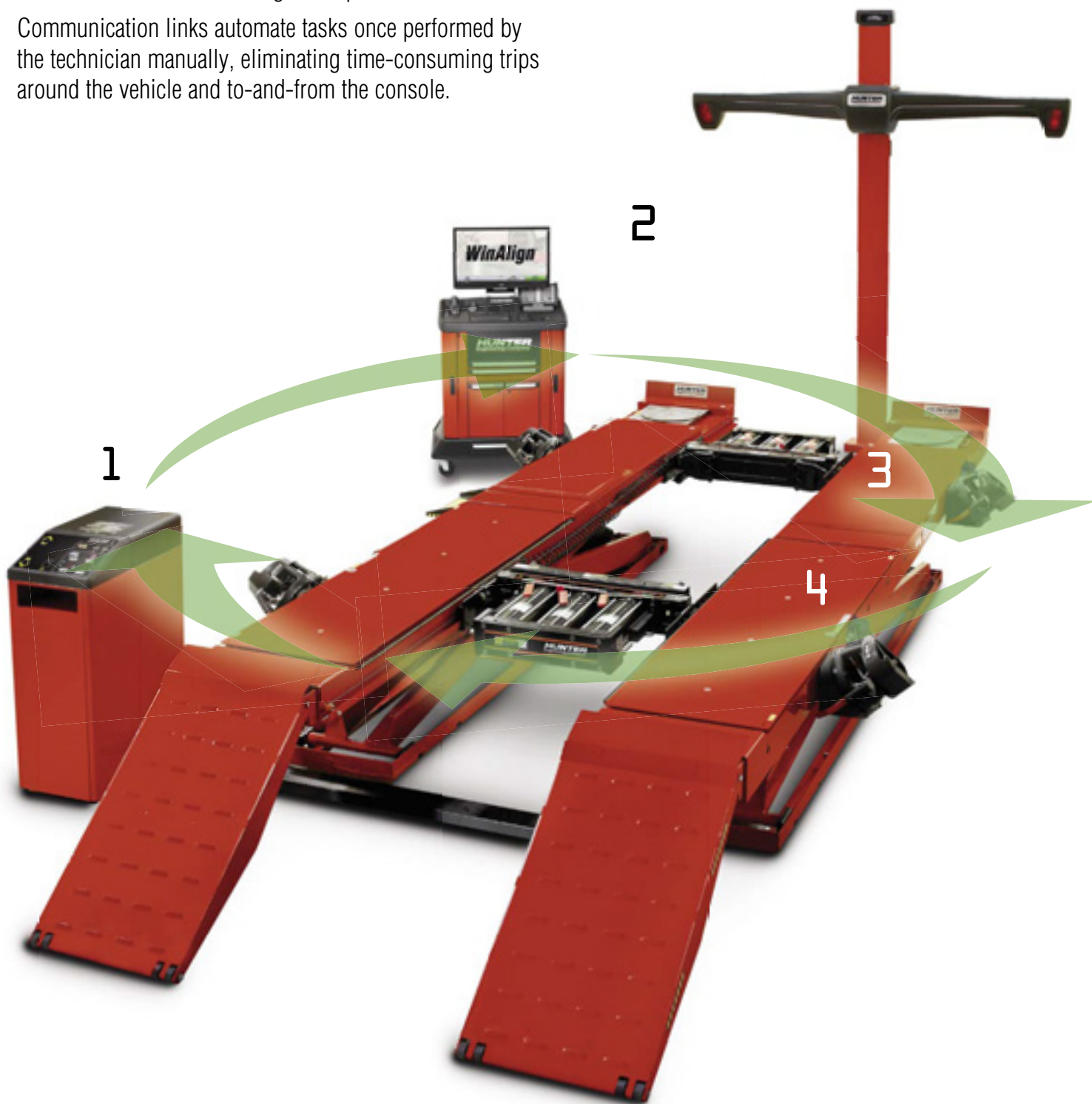
Use detailed printouts featuring your company's logo to sell more work.

FIA Fully Integrated Alignment



FIA streamlines the entire alignment process.

Communication links automate tasks once performed by the technician manually, eliminating time-consuming trips around the vehicle and to-and-from the console.



PATENTED

1



RX Scissor Lift console

- ✓ Raising the vehicle triggers the sensors to look for wheel targets
- ✓ Control PowerSlide® and Inflation Station settings on the lift console
- ✓ Store bar-code scanner and CodeLink tool near the vehicle to save steps



H *AlignLights turn on automatically at alignment height*

PATENTED

2



WinAlign® console

- ✓ Centralized control of entire system
- ✓ Communicate directly with lift to set tire pressure and automatically operate turnplates and slipplates
- ✓ Guide the technician through the alignment process



H *Measurements are taken automatically once the fourth target is installed*

PATENTED

3



PowerSlide® system

- ✓ Slipplates and turnplates automatically lock and unlock at appropriate times
- ✓ No more struggles with lock pins



H *Auto-locking turnplates and slipplates save trips around the vehicle*



PATENTED

4



Inflation Station

- ✓ Automatically inflate all four tires simultaneously
- ✓ Record starting and final pressure
- ✓ Hose recoils to keep work area clear



H *Software tracks before and after tire pressures for the customer's printout*

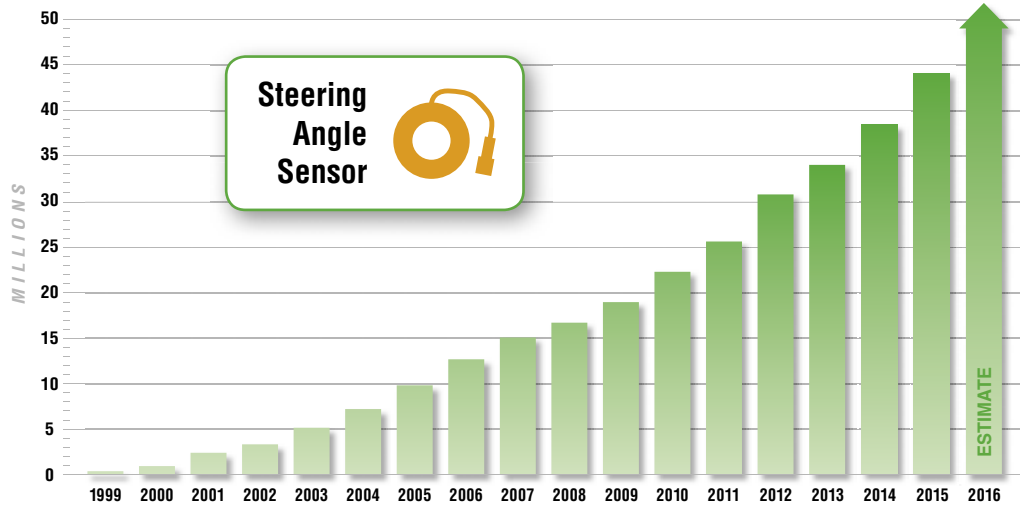


Hunter's Safety System Alignment : Over 50 million vehicles require Safety System Alignment... and growing!



Electronic Stability Control

- ✓ Since 2009, Hunter has supported electronic steering system resets as required by the OEM
- ✓ Several systems use electronic steering system output to determine the vehicle's travel direction

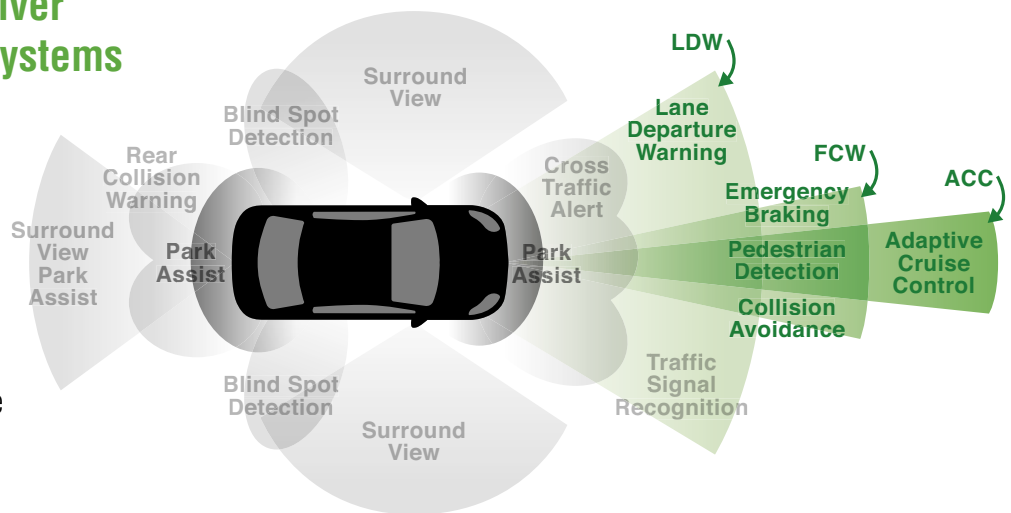


Source: Hunter Engineering Company research

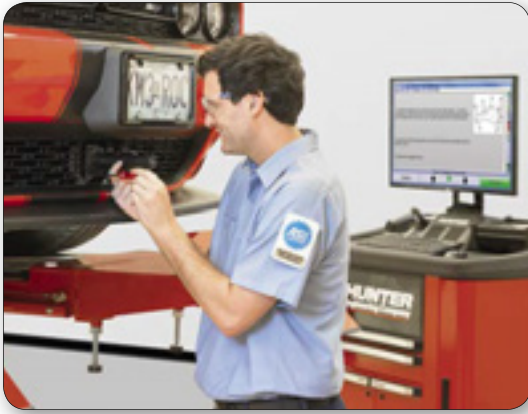
A growing number of vehicles also require additional resets

Advanced Driver Assistance Systems

- ✓ Many vehicles are now equipped with ADAS
- ✓ Many systems **require a calibration after wheel alignment**
- ✓ Often require a short drive be completed as part of the calibration



Hunter's Safety System Alignment: The last step in alignment service



An increasing number of vehicles include advanced driver assistance systems (ADAS). In addition to a mechanical alignment, manufacturer's specifications often require a Safety System Alignment® on many vehicles equipped with ADAS Systems.

ADAS systems most likely to require reset

- ✓ Lane Departure Warning (LDW) - Camera-based
- ✓ Forward Collision Warning (FCW) - Radar-based
- ✓ Adaptive Cruise Control (ACC) - Radar-based

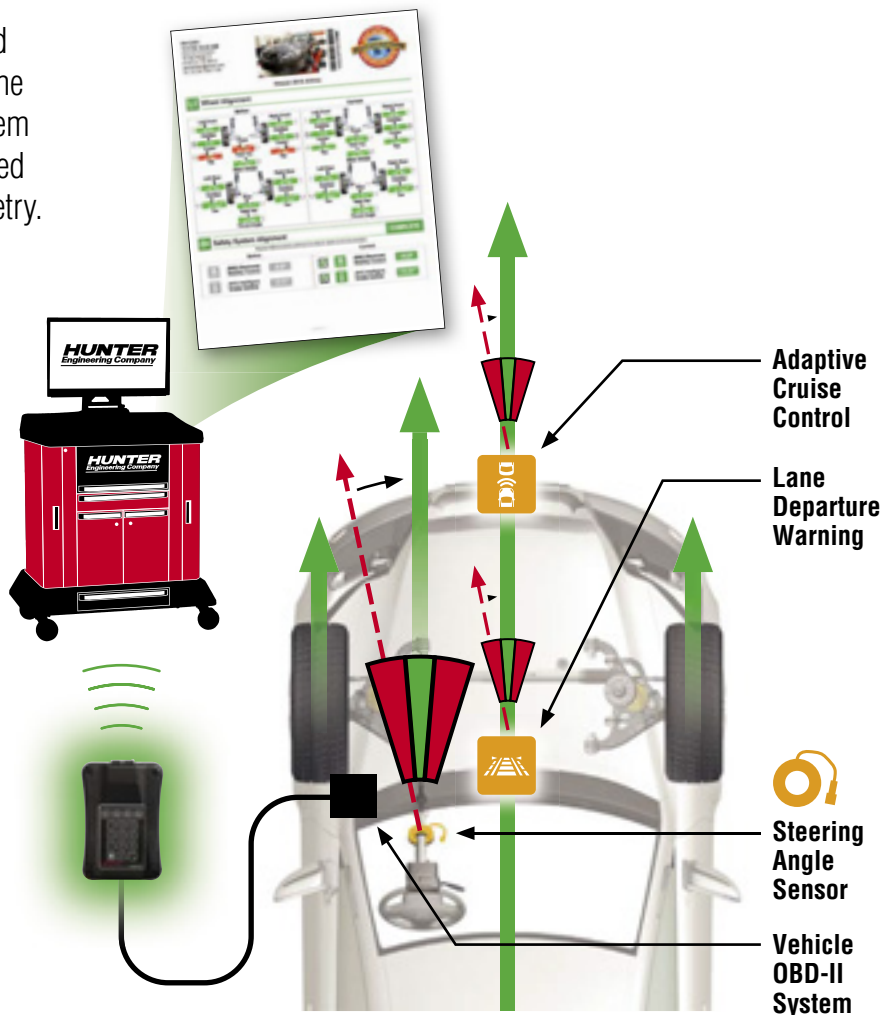
The only integrated, complete alignment procedure



CodeLink's patented integration "links" the vehicle OBD-II system to the aligner to align safety system related sensors to the vehicle's alignment geometry.

CodeLink® advantages:

- ✓ Integrated with Hunter WinAlign® systems
- ✓ Simple instructions shown on aligner screen
- ✓ Only one tool required
- ✓ Wireless communication with aligner
- ✓ Resets ADAS systems and other related sensors
- ✓ Alignment printouts document reset

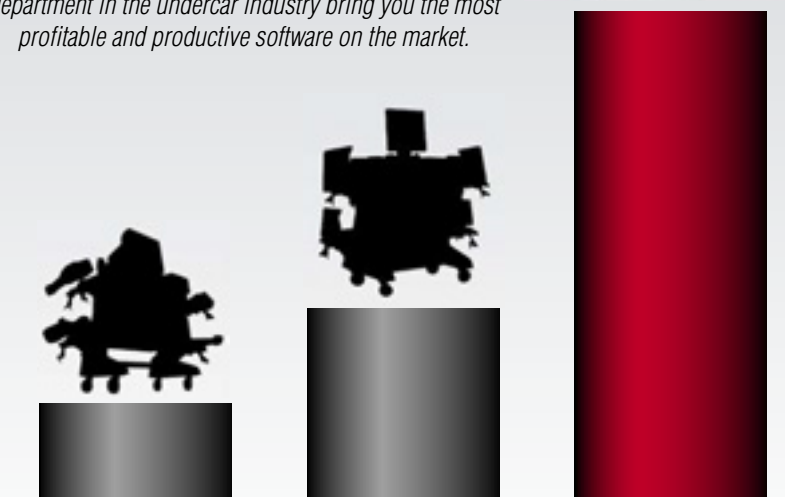


When it comes to award-winning software, WinAlign® is unmatched!

The importance of software...



Over 30 years of experience and the largest R&D department in the undercar industry bring you the most profitable and productive software on the market.



Ordinary systems simply present alignment readings

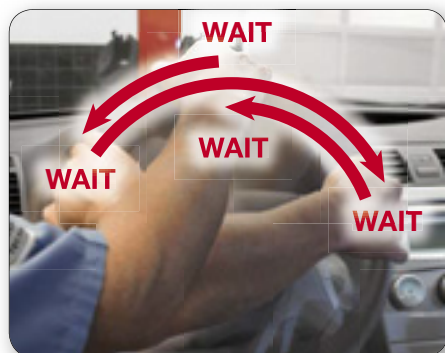
Ordinary camera systems simply speed up these readings

WinAlign maximizes profit and productivity in your alignment bay

- ▶ The **most extensive** vehicle information database for North America's 220 million vehicles.
- ▶ **Vehicle-specific** procedures guide your technicians with step-by-step instructions.
- ▶ **Patented and award-winning power tools** complete the work accurately the first time, every time.
- ▶ **WinAlign maximizes profit and productivity in your alignment bay.**

New Faster Caster procedure!

- ✓ Eliminates wait times during caster steer
- ✓ Saves time and increases speed
- ✓ Reduces brake pedal depressor installation by 86%
- ✓ Reduces battery drain from brake light draw



No more waiting for left, right, and center readings during caster steer



Steer left, right and back center



ExpressAlign®

Perform every alignment with a streamlined procedure. ExpressAlign analyzes each job and presents the optimal action sequence with the minimum steps required.



WinToe®

Ensure a straight steering wheel every time without repeated adjustments or using a steering wheel holder.

🚗 A timesaver on nearly every alignment



Tools and Kits Database

Save trips back and forth to the tool box. Hunter presents all of the tools and aftermarket correction kits needed for each alignment.

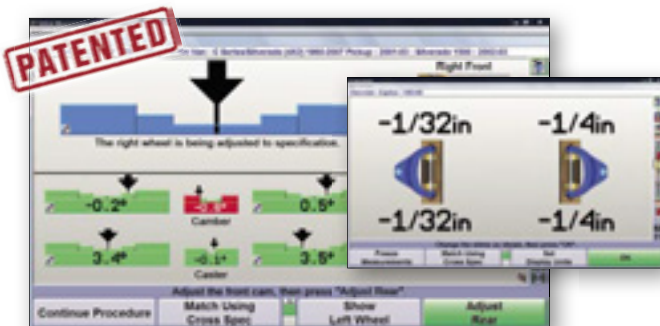
🚗 Online ordering supported



Virtual View®

See your alignment job in 3-D using real-time 3-D graphics. Used by experts and novices alike.

🚗 Every alignment can be shown in 3-D



Control Arm Movement Monitor®

Cut adjustment times in half for front-shim, dual-cam or dual-slot vehicles. Step-by-step graphics let you get it right on the first try.

🚗 Over 60 million vehicles benefit



Wheel-Off Adjustment

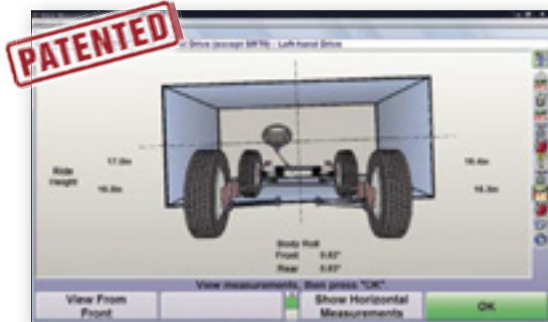
Speed the alignment process by making adjustments with the wheel removed.*

🚗 Available when you need it

* For three-dimensional targets, both Wheel-Off Adjustment Kit and SCA Adaptor Kit 20-2664-1 is required.

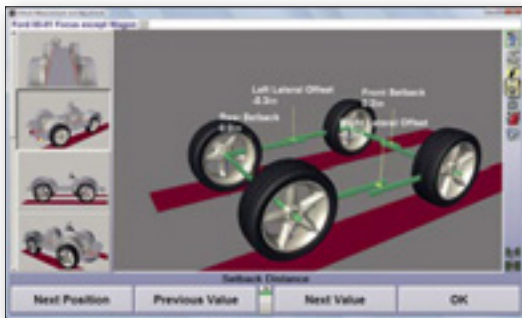
Take your alignment business to the next level!

Perform body shop and specialty alignments...



Suspension Body Dimension Audit

Quickly screen vehicles to determine alignability and collision repair needs.



Symmetry Angle Measurements

Instantly access symmetry angles and setback for your body shop customers.



Live Ride Height Adjustment *

Measure and adjust ride height in real-time.

Over 20 million vehicles require ride height measurement to complete alignment service



Shim-Select® II

Eliminate confusing shim charts and tables. Shim Select II quickly calculates and displays the template you need for proper shim installation.

Over 30 million vehicles benefit



Automatic Bushing Calculator®

Calculate the proper bushing size and position adjustment without wasting time with a zero bushing.

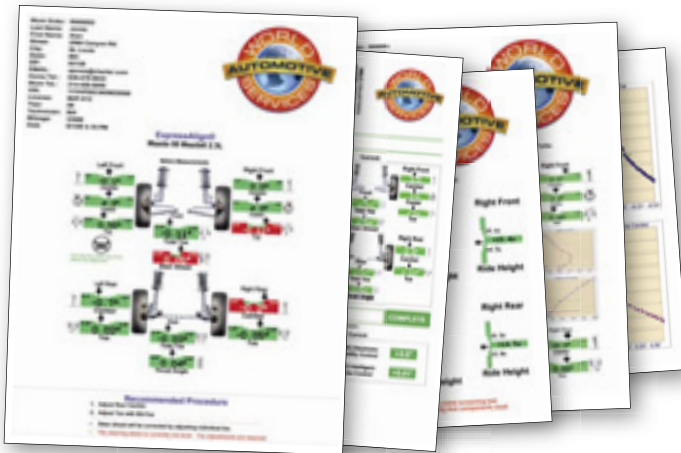
Over 10 million light trucks and vans benefit



Drive-on camera

Safely and easily position a vehicle on a lift with one technician using the aligner screen as a guide. (Drive-on camera sold separately.)

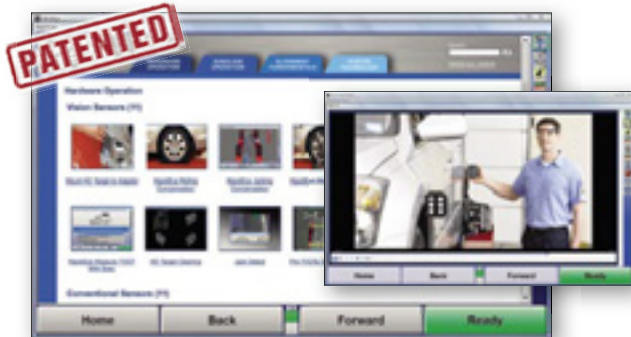
Help your customers make informed decisions!



WinAlign® printouts help sell work

Explain needed parts and repairs and show completed work to customers using detailed, color-coded printouts.

H *Clear and detailed printouts help you communicate and build rapport with your customers and sell more alignments*



WinAlign® Video Library*

400+ videos and animations cover all aspects of wheel alignment today.



TPMSpecs®

TPMSpecs pulls together **over 100** TPMS procedures into a simple, yet comprehensive, user-friendly format for the technician.



The latest specs available online

Download, access and communicate alignment service information through the Internet.



Enhance your point-of-sale performance

Provide front-shop personnel with quick, convenient access to vehicle-specific undercar information to explain and sell service.

* Standard with WA400 consoles, optional with WA300 consoles.

Use your aligner to perform Quick Checks!



Use detailed printouts featuring your company's logo to sell more work

- ✓ Total toe front and rear
- ✓ Camber on all wheels
- ✓ Tire wear indication
- ✓ Identifies vehicles that require Safety System Alignment



20-2813-1 CodeLink*

Retrieves emission codes. Wirelessly transfers important vehicle information to console.



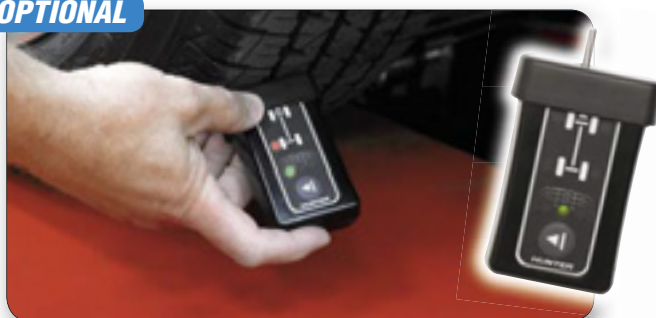
OPTIONAL

20-2781-3 Battery Health*

Tests battery to OEM specs. Sends results to console wirelessly in 10 seconds.

MIDTRONICS

OPTIONAL



20-2782-1 Tire Tread Depth*

Quick and easy tire wear check. Conditions transmitted to console automatically.



OPTIONAL

Quick Tread® creates a three-dimensional model of the customer's tire and can be easily added to existing Quick Check® inspection systems.

Choose the right alignment console for your shop!

WinAlign WA400 Premium consoles

Industry-leading hardware	Processor	3.30 GHz Intel® Core™ i3
	Memory (DDR2)	4 GB of DDR3 SDRAM
	Hard drive	120.0 GB SSD hard drive (or greater)
	DVD-RW/CD-RW drive	Standard
	Monitor class	24" or 27" widescreen LCD (32" available on large console)
	Wireless network module	Standard
	Operating system	Windows® 7
	Three-dimensional target (TD Target®) support	Standard
	Vehicle specifications (30 plus years)	Standard (2 years free updates)
	Large console with drawers	Standard (with WA48X consoles)
	Compact console with printer drawer	Standard (with WA47X consoles)
	Console-top storage and charging station	Standard (with mobile WA400 consoles)



Large console

Award-winning productivity tools	PATENTED Award-winning WinAlign® software	Standard
	PATENTED Real-time specs delivered by web	WebSpecs® (2 years standard)
	PATENTED Steering system reset (integrated)	Yes (with standard CodeLink®)
	Bar code reader	Standard
	Quick Check	Standard
	Complete TPMS reset database	Standard
	PATENTED Live Ride Height adjustment	Standard
	PATENTED Fully Integrated Alignment	Yes (FIA-equipped lift required)
	PATENTED Modified vehicle alignment	Yes (with standard WinAlign Tuner)
	PATENTED Vehicle inspection with photos	Standard
	PATENTED Tools & Kits – basic catalog	Standard
	PATENTED Tools & Kits – video and photos	Standard
	Equipment video help/assistance	Standard
	PATENTED ShopResults (via ShopResults.NET®)	1 year standard
	UnderCarInfo (via UnderCarInfo.NET)	1 year standard
	PATENTED Training and productivity aids	4,000+ photos, 1,600+ illustrations 400+ videos & animations



Compact console



Wall-mount console

Choose the right sensor package for your shop!



Fixed-column configurations fit most service bay applications.



Motorized and manual movable-camera configurations provide a full range of vertical travel for additional lift height.



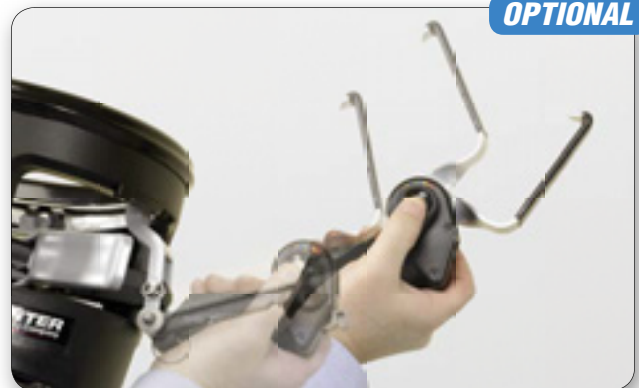
Cabinet-mounted configuration is mobile to service multiple alignment bays and provides a full range of travel for additional lift height.



Wall- and ceiling-mount configurations are perfect when space is at a premium.



Floor-mounted overhead configurations are ideal for drive-through bays or to accommodate unique applications.



One set of adjustable clamp arms covers the same clamping range as standard multi-arm kit.

HawkEye Elite® alignment sensor and adaptor specifications



Specifications	PATENTED	No metal-to-metal contact with wheel	Standard
		Weight of assembly	6 lbs.
		Profile of assembly	9 inches
		Installation time per wheel	5 seconds
		Rolling compensation style	Forward
		Camera resolution	2,608 x 1,952 (pixels per camera) 20,000,000 (pixels total)
		Track width	80 inches
		Wheelbase	210 inches
		Distance to wall*	66 - 107 inches
		Suggested distance*	99 inches
		Short-bay distance (see site info)*	66 inches
	Secondary Measurements		S.A.I. and included angle
		Setback	✓
		Maximum steering angle**	To lock
PATENTED		Live ride height***	✓
		Wheelbase difference	✓
		Track width difference	✓
		Tread width difference	✓
		Lateral offset	✓
		Rear setback	✓
		Axle offset	✓
Body Measurements	PATENTED	SBDA	✓
	PATENTED	Body angle	✓
	PATENTED	Body wheel offset & setback	✓
	PATENTED	Body roll**	✓
Adjustments	PATENTED	Way Up Way Out WinToe**	✓
	PATENTED	Wheel-Off Adjustment	Optional

* Refer to site requirements for exact bay specifications.

** Requires standard wide-angle target extensions.

*** Requires Ride Height targets. Standard with WA400 consoles, optional with WA300 consoles.

Increase revenue with Hunter merchandising!

Introduce your wheel alignment capabilities and educate your customers with great Point-of-Sale options from Hunter.



Sell more alignments with *clear and informative* printouts



Customized column cap

Make your alignment bay stand out. Hunter's lighted sensor column cap can be customized with your logo or shop name. (available for most sensor configurations)



Be sure to check out other Hunter literature for more quality products from Hunter Engineering.

HUNTER
Engineering Company

www.hunter.com



1116QAP9M.78