

Bosch Scissor Lifting System

1,400 kg



BOSCH

Invented for life

An uplifting experience! Experience our versatile scissor lifting

The Bosch scissor lifting table offers easy, safe and efficient removal and installation around the vehicle. In particular engine, gearbox, chassis and electrical vehicle batteries.



Benefits at a glance

- ▶ The table has up to 1,400 kg payload.
- ▶ Easy to handle and tiltable with self explanatory functions.
- ▶ Splitting function allows to separate components (such as engines and transmissions) to access inner parts (e.g. torque converter).
- ▶ High ground clearance allows perfect positioning of workshop crane.
- ▶ With lift range from max 1,815 mm to min 580 mm, the lifting table can be adjusted to the perfect work bench height for your technicians.
- ▶ Powered by compressed air and designed with an abundance of features that focus on the ease of use and the technicians' safety.

Bosch Scissor Lifting System 1,400 kg



Tiltable

The two axis tilting motion allows to precisely place the table to safely remove and install vehicle components.



Easy movement under load

Swivel (360 deg.) casters and their little resistance allow a precise and easy positioning of the table.



Splitting function

Allows to separate components to access inner parts. Additional extension of the movable table section up to 330 mm and partial load of up to 800 kg.



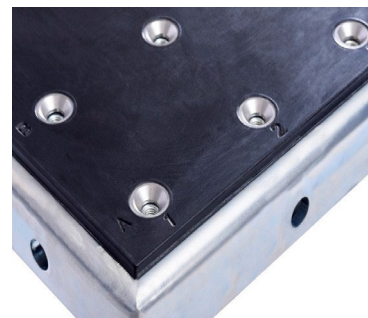
Central Braking System

The brake acts on all 4 wheels and can be applied during motion or to secure the table in place.



Option: Pushbar extension kit

The pushbar extension kit allows to safely place bulky load on the table.



Option: Protective rubber mat with mounting bushings

allow for firm mounting of accessories, while protecting sensible parts from scratching.

Technical data	
Product Weight	628 kg
Rated Capacity	1,400 kg
Power Units	Air-over-hydraulic pump
Requirements	5-10 Bar (nominal value @7 bar)
Height	580 mm (min) / 1,835 mm (max)
Stroke	1,255 mm
Ground Clearance (under skid plate)	229 mm
Track width	800 mm
Caster Wheels	4x Ø200 mm with swivel lock, central brake lever operation on 4 wheels

Technical data	
Table top tilt angle in Y (left/right)	+/- 4,5 deg.
Table top tilt angle in X (forward/ backward)	+/- 1 deg.
Base Length (overall)	2,295 mm
Base width	977 mm
Table top fixed/extending part	863 mm / 918 mm (25 mm gap)
Extension (Splitting function)	330 mm
Table top length overall	1,806 mm / 2,136 (extended)
Table top width	800 mm
Conformance	ASME PASE-2014, European Norm and TÜV Süd

[Watch video](#)

