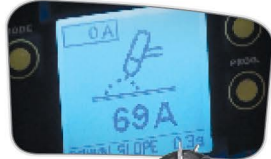


PRO SPOT

QUALITY WELDING SYSTEMS



ROTUNDA



PULSE MIG SERIES



SP-1
Pulse MIG



SP-5
Smart MIG



SP-2
Smart MIG



Aluminum



Silicon-Bronze



Steel

SP-5

SMART MIG Pulse Welder

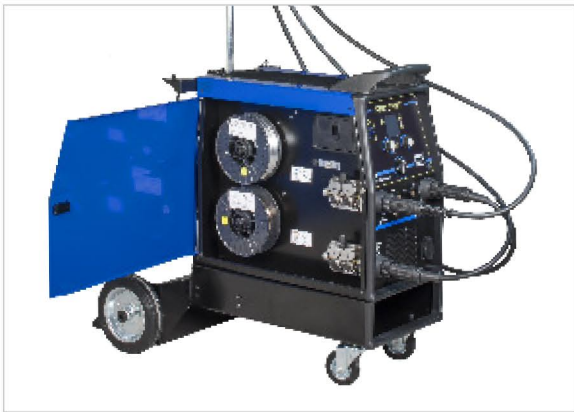
3 MIGs IN 1

Pre-Set Syergic Curves Weld Settings • Anti-hot start and

Aluminum • Steel • Silicon Bronze

+TIG & MMA (Stick)

3-Spools • 5 Weld Heads



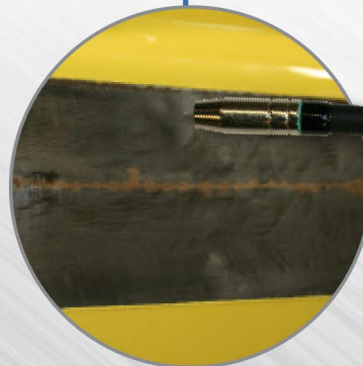
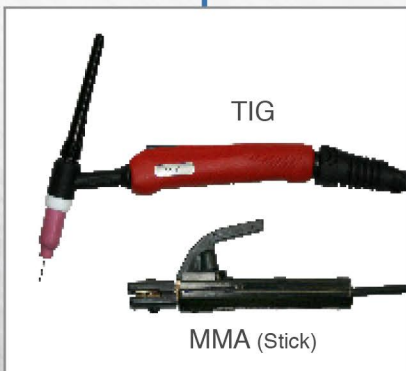
- Pre-Set Syergic Curves
- Customizable Weld Settings
- Anti-Sticking
- Adjustable hot start and arc force

The SP-5/SP-2 Smart Mig are 220V/20A Single phase MIG welders. They use pulse technology for welding on Aluminum and stainless steel. The SP-5 has 3 wire spools (Alu, Silicon Bronze and steel) and 3 torches for each material, and the SP-2 has 2 wire spools () and 2 torches; so no need to switch spools or torches when welding different materials. And the software is smart. Just grab the torch of desired material, click the trigger once and the software changes to correct weld settings and gas automatically. The SP-5 also comes with a TIG torch and a stick (MMA) electrode torch so you have 5 different welders in one.



Equipped with a heavy-duty gas bottle rack that holds two big size gas bottles. One for Argon for Alu and Silicon bronze) and one for 75/25 mix (75% Argon and 25% CO2) for steel

Input Voltage:	Single Phase 208 - 240v 50/60 hz
Amp. Min - Max:	MMA - 5/200, TIG - 5/200, MIG - 20/200
Protection:	IP 22
Insulation:	H
System Weight:	154.32lb (70kg)



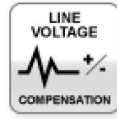
ves • Customizable
Sticking • Adjustable
and arc force

2 MIGs IN 1

SP-2 SMART MIG Pulse Welder

Aluminum • Steel
• Silicon Bronze

2-Spools •
2 Weld Heads



The synergic mode sets all parameters automatically and all you have to do is to set the thickness you are welding. Very easy and it performs highest quality weld every time.

The Aluminum torch features a special graphite liner that assure nice smooth feeding of the aluminum wire. It works so well that you can use Alu 4043 wire with no problem and no need for expensive and complicated Push/ Pull guns. The 4043 wire welds aluminum much cleaner and performs the highest quality aluminum welds. And with the pulse mode it also performs outstanding on thin aluminum panels. Thick or thin this aluminum pulse feature performs.

The digital display (3x3" big) shows all parameter at any given time and makes any adjustments extremely easy to view and understand.

The software also allow you to save any personal parameters for easy call back any time.



TIG features:

- Lift arc (touch start)
- Continues or Pulsed welding
- 2T/4T selection
- Up and Down slope adjustment
- Frequency and current levels in TIG pulsed welding
- Final current

Electrode features:

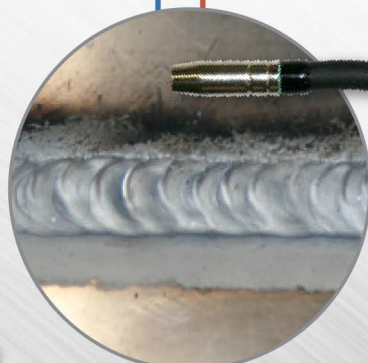
- Anti sticking
- Adjustable hot start and arc force

Some other adjustable parameters including:

- Pre-set synergic curves and parameters
- 2T/4T
- Spot function feature
- Pre-Post gas adjustment
- Electronic inductance
- Soft Start
- Burn Back Time (b.b.t)



Input Voltage:	Single Phase 208 - 240v 50/60 hz
Amp. Min - Max:	20/200
Protection:	IP 22
Insulation:	H
System Weight:	154.32lb (70kg)



Steel

Next Page For SP-1 →

**ULTRA
PORTABLE
MIG, TIG
MMA** (STICK)

SP-1 PULSE MIG Welder



The same great technology behind the SP-2 and SP-5 MIG welders but in a compact all-in-one package.

Input Voltage:	Single Phase 208 - 240v 50/60 hz
Amp. Min - Max:	MMA - 5/200, TIG - 5/200, MIG - 20/200
Protection:	IP 22
Insulation:	H
System Weight:	154.32lb (70kg)



PRO SPOT
QUALITY WELDING SYSTEMS



Contact your Rotunda area Sales Manager
or your Field Service Engineer

1-800-ROTUNDA www.OneRotunda.com