

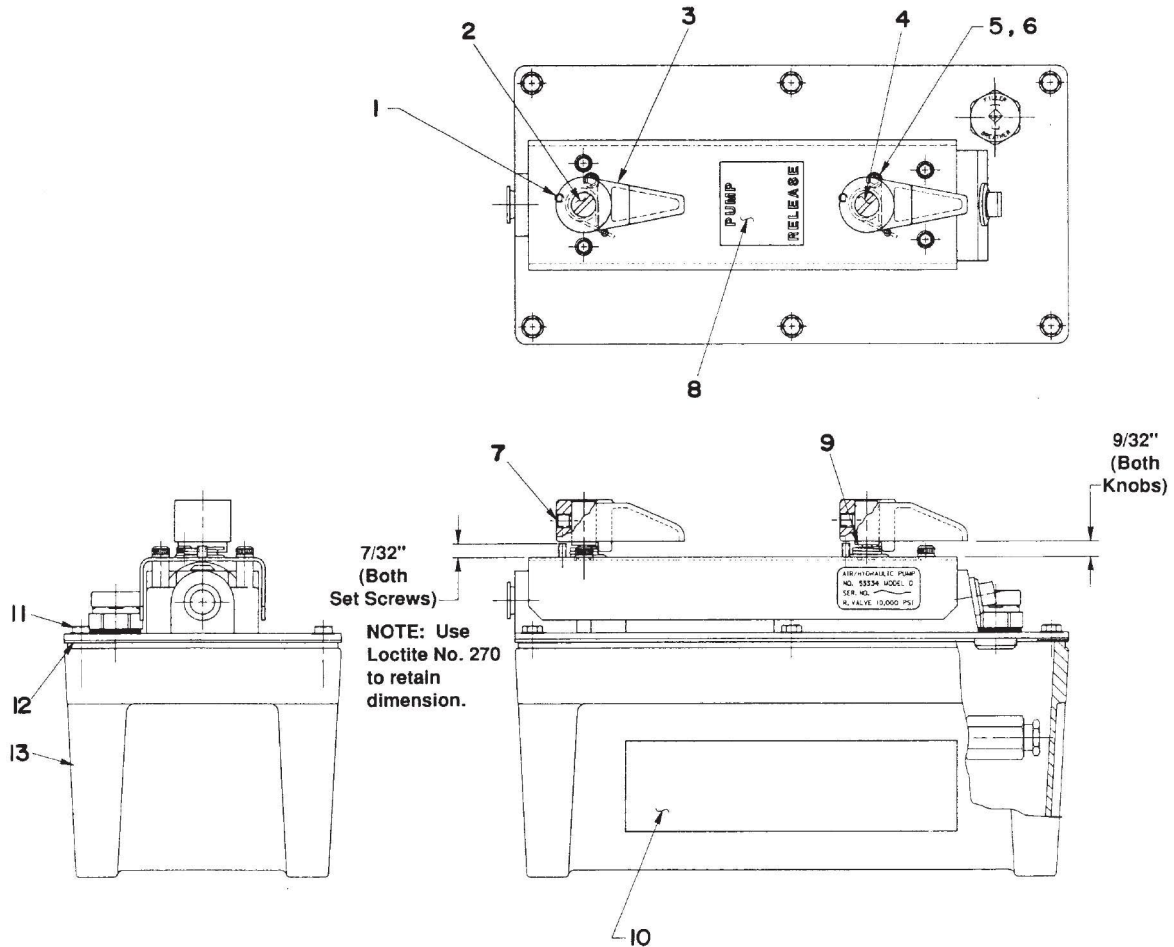
Parts List for:

Contact your Rotunda area Sales Manager
or your Field Service Engineer

53334

1-800-ROTUNDA www.OneRotunda.com

AIR HYDRAULIC PUMP



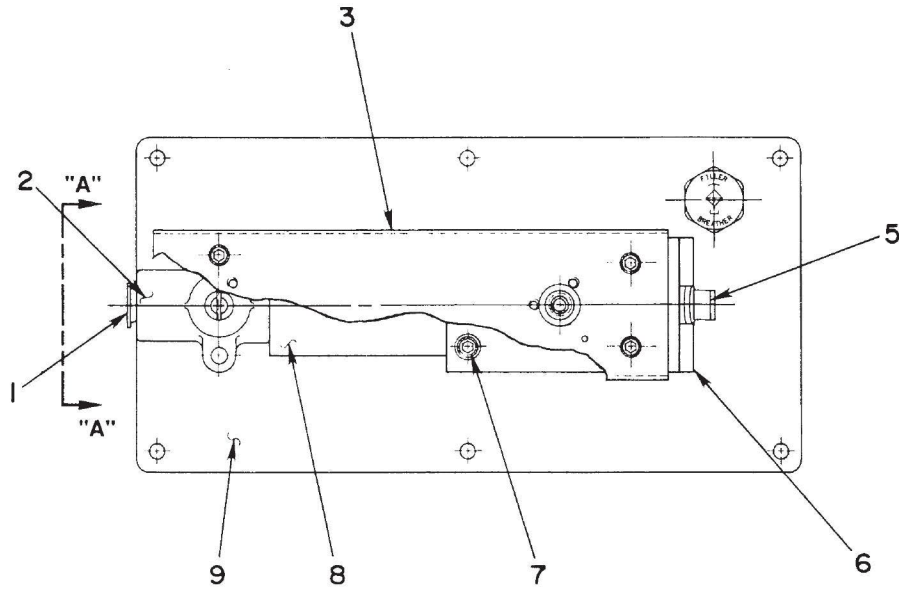
Item No.	Part No.	No. Req'd	Description
1	15480	2	Set Screw (#8-32 X 1/2 Lg.)
2	216272	1	Adjustment Screw
3	21643	2	Knob
4	215123	1	Adjustment Screw
5	17965	2	Soc. Hd. Cap Screw (#8-32 X 1/4 Lg.)
6	10240	2	Lockwasher (For #8 bolt)
7	10556	2	Set Screw (1/4-20 X 1/4 Lg.; Torque to 30/50 in. lbs.)
8	215125	1	Decal
9	308713	2	Torsion Spring
10	305495	1	Trade Name & Important Decal
11	211060	6	Thread Forming Screw (Torque to 25/30 in. lbs.)
12	*33853	1	Reservoir Gasket
13	61243	1	Reservoir

Part numbers marked with an asterisk(*) are contained in Repair Kit No. 300433.

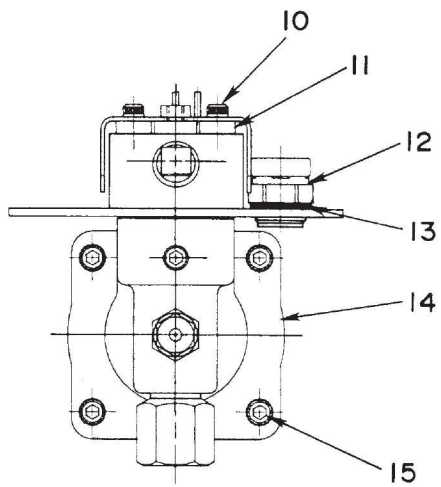
Sheet No. 1 of 2

Issue Date: Rev. 4-15-95

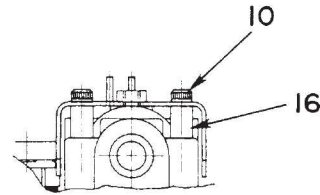
TOP VIEW



END VIEW



VIEW AA

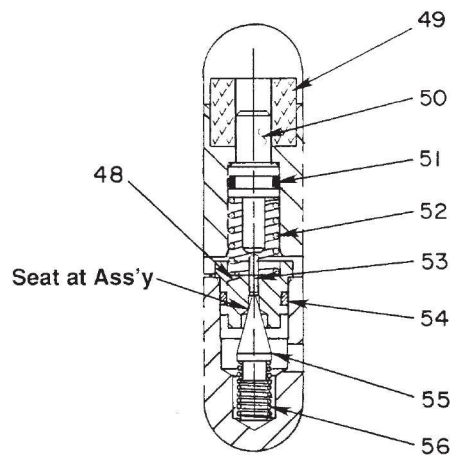
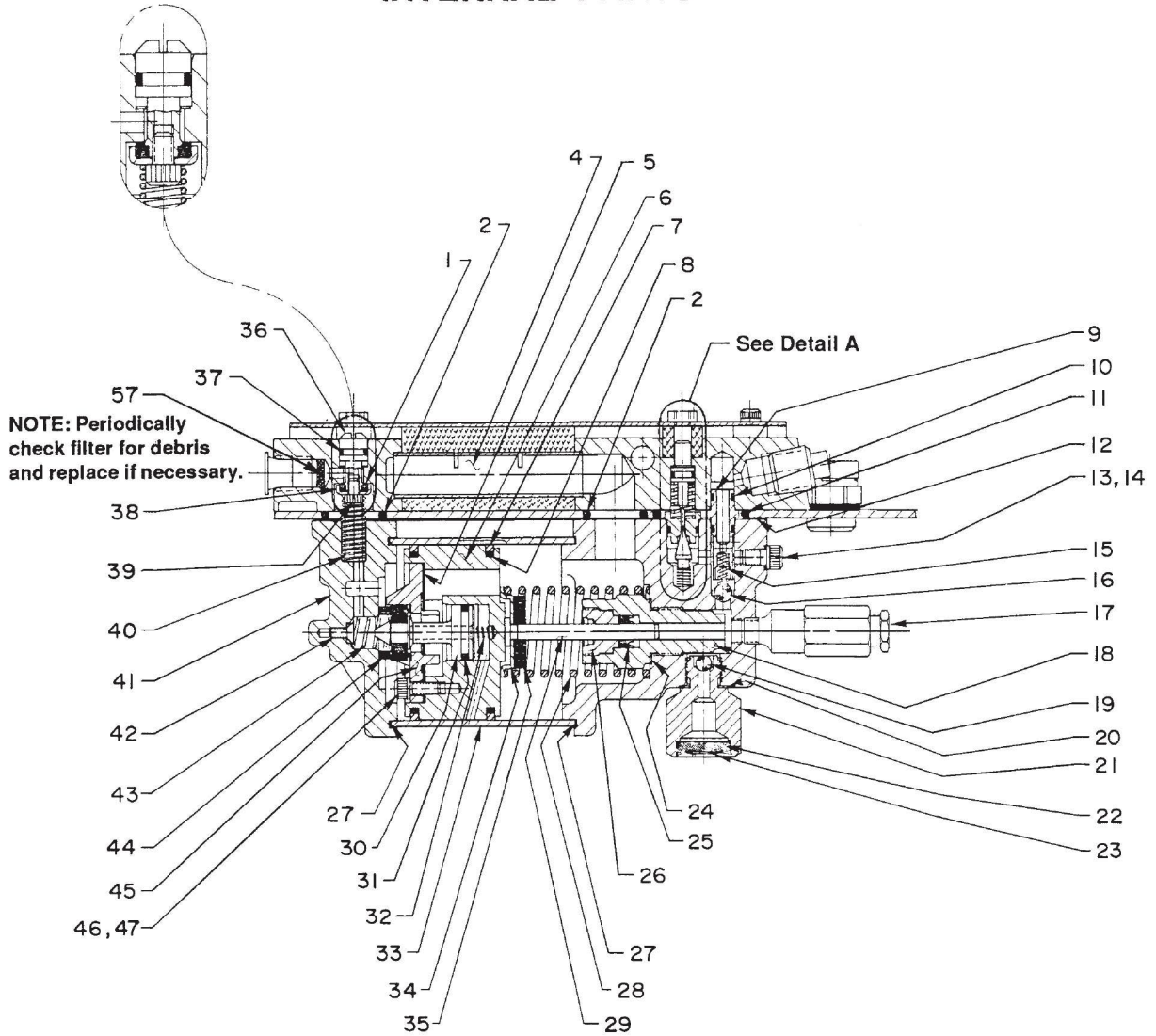


Item No.	Part No.	No. Req'd	Description
1	14794	1	Plastic Plug
2	37199	1	Air Intake Body
3	47488	1	Air Pump Shroud
5	211061	1	Plastic Plug (3/8 NPTF)
6	52381	1	Release Valve Body
7	11151	2	Soc. Hd. Cap Screw (#10-24 X 1 1/4 Lg.; Torque to 50/60 in. lbs.)
8	*29992	1	Foam Tube
9	45840-BK2	1	Cover Plate
10	14423	4	Soc. Hd. Cap Screw (#10-24 X 2" Lg.)

Item No.	Part No.	No. Req'd	Description
11	28822	2	Spacer
12	*20937-1	1	Filler Cap
13	*200415	1	Rubber Gasket
14	50494	1	Pump Body
15	17428	4	Soc. Hd. Cap Screw (1/4-20 X 4" Lg.; Torque to 85/95 in. lbs. oiled) NOTE: Cross torque in increments of 30 in. lbs.
16	215121	2	Spacer

Part numbers marked with an asterisk (*) are contained in Repair Kit No. 300433.

INTERNAL PARTS



DETAIL A

Parts List, Form No. 100718, Back sheet 2 of 2

Item No.	Part No.	No. Req'd	Description	Item No.	Part No.	No. Req'd	Description
1	*28182	1	Piston Poppet	32	*12692	1	Compression Spring (3/16 O.D. X 1 11/16 Lg.)
2	*10276	2	O-ring (1" X 3/4 X 1/8, -210)	33	37434	1	Air Cylinder (Locate groove on upper half of pump with chamfered tube end towards rear head as shown.)
4	28357	1	Muffler	34	203143	1	Rubber Bumper
5	*28239	1	Gasket	35	210994	1	Spring Guide
6	52390	1	Piston Body	36	33841	1	Actuator Button
7	*14265	2	Piston Seal	37	*10267	1	O-ring (7/16 X 5/16 X 1/16, -011)
8	*11229	2	O-ring (2 3/8 X 2 3/16 X 3/32, -139)	38	28198	1	Guide Seal
9	34378	1	Check Valve Body	39	13936	1	Soc. Hd. Cap Screw (#3-32 X 1/4 Lg.)
10	*211053	2	O-ring (3/8 X 1/4 X 1/16, -010)	40	12691	1	Compression Spring (3/8 O.D. X 1 1/2 Lg.)
11	*10281	1	O-ring (1 1/2 X 1 1/4 X 1/8, -218)	41	51480	1	Rear Head
12	*34283	1	Gasket	42	*205674	1	Flat Hd. Screw (#8-32 X 3/8 Lg.; Torque to 12/18 in. lbs.)
13	*10442	1	Copper Washer (3/8 X 1/4 X 1/32)	43	*205679	1	Compression Spring (.485 O.D. X .915 Lg.)
14	10002	1	Soc. Hd. Cap Screw (1/4-20 X 3/8 Lg.; Torque to 90/100 ft. lbs. oiled)	44	*28183	1	Piston Poppet
15	*10445	1	Compression Spring (5/32 O.D. X 3/4 Lg.)	45	33822	1	End Piston Plate
16	*10423	1	Steel Ball (9/32 Dia.)	46	10241	3	Lockwasher (For #10 bolt)
17	21278	1	Relief Valve Ass'y (Set at 10,100/10,700 PSI)	47	211054	3	Soc. Hd. Cap Screw (#10-24 X 1/2 Lg.; Torque to 50/55 in. lbs.)
18	45278	1	Piston Cylinder (Torque to 90/100 ft. lbs. oiled)	48	308784	1	Poppet Retainer
19	*10375	1	Steel Ball (1/4 Dia.)	49	*206504	1	Foam Tube
20	*10261	1	Copper Washer (3/4 X 19/32 X 1/32)	50	28227	1	Release Valve Button
21	308893	1	Filter Adapter (Torque to 40/50 ft. lbs. oiled)	51	*211053	1	O-ring (3/8 X 1/4 X 1/16; -010)
22	214578	1	Filter	52	13944	1	Compression Spring (3/8 O.D. X 1/2 Lg.)
23	214586	1	Retaining Ring	53	215124	1	Dowel Pin (Place tapered end toward poppet)
24	*10263	1	Copper Washer (1" X .765 X 1/32)	54	*15279	1	O-ring (1/2 X 3/8 X 1/16; -012)
25	*13934	1	U-cup	55	215122	1	Needle Poppet
26	*304295	1	Retainer Nut (Apply Loctite #277 to external thds. & torque to 80/100 in. lbs.)	56	14624	1	Compression Spring (1/4 O.D. X 3/4 Lg.)
27	*17429	2	Backup Ring (2 15/16 X 2 3/4 X .045; -148)	57	*216296	1	Filter Disc
28	*13938	1	Compression Spring (1.452 O.D. X 4 7/16 Lg.)				
29	28226	1	Piston				
30	305475	1	Exhaust Valve Stem				
31	*211052	1	O-ring (.900 X .706 X .097)				

Part numbers marked with an asterisk (*) are contained in Repair Kit No. 300433.

Refer to any operating instructions included with this product for detailed information about operation, testing, disassembly, reassembly, and preventive maintenance.

Items found in this parts list have been carefully tested and selected. **Therefore: Use only genuine replacement parts!**

Additional questions can be directed to our Technical Services Department.