

HUNTER
Engineering Company

HawkEye Elite® Alignment Systems

Greater profit and productivity through innovation



ROTUNDA



Hunter's latest productivity features!



PATENTED

Revolutionary adaptor design!

- ✓ Faster setups!
- ✓ No metal-to-metal contact!
- ✓ No knob twisting!



PATENTED

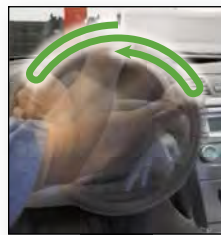
Superior target design!

- ✓ Lighter design!
- ✓ Narrower profile!
- ✓ Faster readings!

HawkEye

Elite





NEW

Faster Caster!

Saves time, increases speed and reduces battery drain from brake light draw.



EXCLUSIVE

QuickComp™!

Compensate all wheels and capture initial measurements in one motion.



PATENTED

High-resolution cameras!

Four high-resolution cameras provide alignment measurements with pinpoint accuracy.



STANDARD

Recall specs in a snap!

Recall OE specs and vehicle-specific alignment procedures instantly.**



EXCLUSIVE

New console design!

Integrated storage and charging for popular accessories.*†



PATENTED

Patented steering system reset integration!

Reset computerized steering systems on a wide variety of vehicles with one simple tool.

* Available only on mobile WA400 consoles.

** Standard with WA400 consoles, optional with WA300 consoles.

† Remote Indicator sold separately.

QuickGrip® wheel adaptors & three-dimensional targets

Hunter's patented QuickGrip® adaptors and three-dimensional targets accelerate service with set-up times in seconds instead of minutes...

HawkEye
Elite



PATENTED

Extremely Fast Installation

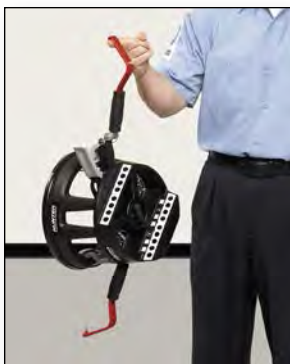
- ✓ Spring-loaded arms grip the tire
- ✓ Thumb switch secures the clamp
- ✓ Off-center clamping has no effect on accuracy



PATENTED

Avoid Damage to Expensive Rims

- ✓ Grips tire, not rim
- ✓ No metal-to-metal contact
- ✓ Only protective ring contacts rim



PATENTED

Less Weight

- ✓ Weighs only 6 lbs.
- ✓ Nearly 50% lighter than previous designs



PATENTED

Space-Efficient Profile

- ✓ Approx. 9" profile
- ✓ Easy to work around
- ✓ Great for narrow bays

gets



PATENTED

Quick-Change Arms



✓ Interchangeable arms cover up to 37" assemblies

✓ One arm fits approximately 90% of applications

PATENTED

Deep-Wheel Extension



✓ Deep rims or protruding hubs, no problem

✓ Standard accessory

PATENTED

Wide-Angle Targets



✓ Perform max steer procedure, as needed

✓ Standard accessory

PATENTED

Low Maintenance

✓ Shop-tough polymer structure withstands drops

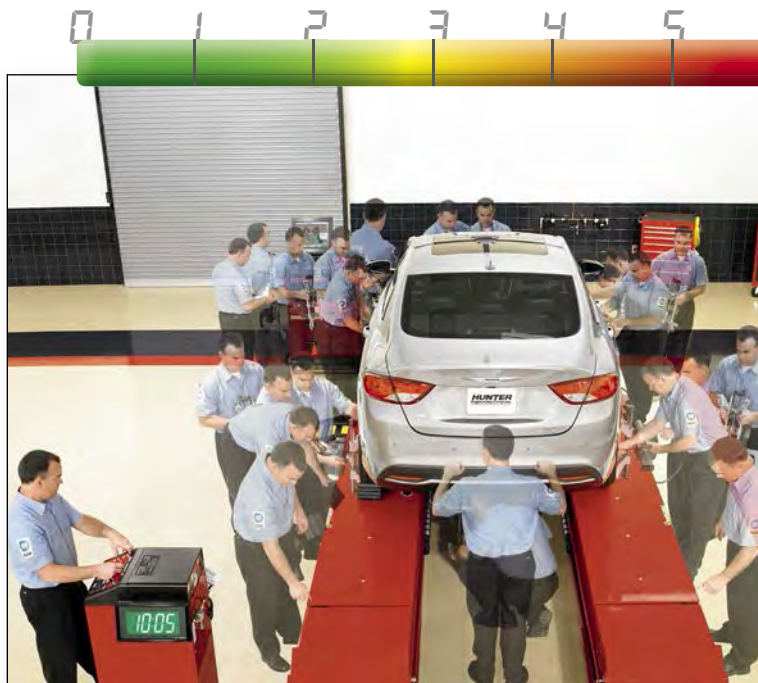
✓ No electronics, cables or calibration

✓ Only occasional cleaning required



Previous setups used valuable shop time...

Conventional electronic-sensor system – 10-minute-plus procedure



- ✓ Chock wheels and lift vehicle
- ✓ Jack up front and rear of vehicle
- ✓ Check air pressure and recall specs
- ✓ Mount all 4 sensors, compensate each sensor, and remove pins
- ✓ Lower rear and front of vehicle and jounce
- ✓ Steer caster
- ✓ Print results

10:05 Total

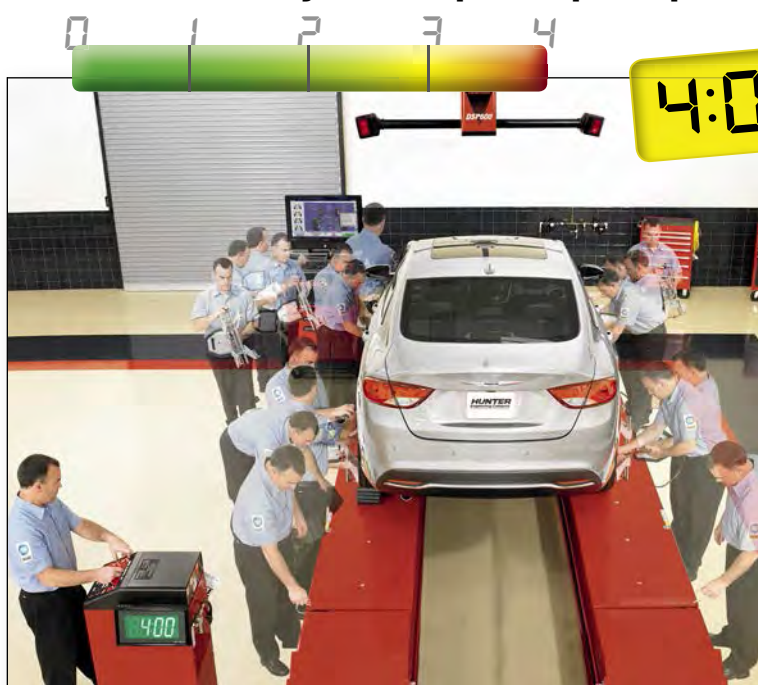


ACTIVITY TRACKER



Older technology requires long set-up times...

Camera-sensor systems speed up the process

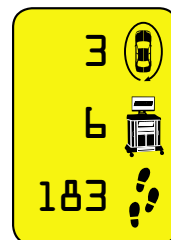


- ✓ Chock wheels and lift vehicle
- ✓ Check air pressure and recall specs
- ✓ Mount targets
- ✓ Roll backward, then forward to compensate
- ✓ Remove pins
- ✓ Steer caster
- ✓ Print results

4:00 Total



ACTIVITY TRACKER



Early camera technology improved efficiency...

...Today, present your results in just 70 seconds!




Hunter's HawkEye Elite® and Premium RX Lift capture all readings and produce measurements in 70 seconds!


Hunter's 70-second procedure


- ✓ Chock wheels and raise lift to work height
- ✓ Mount targets and set air pressure
- ✓ Roll forward to compensate sensors
- ✓ Scan VIN to recall specs and perform faster caster steer
- ✓ Vehicle results print automatically

1:10 Total

ACTIVITY TRACKER

1  trip around the vehicle

0  trips to the console

72  total walking steps

trip around the vehicle

trips to the console

total walking steps



Fast printouts in 70 seconds!

Use detailed printouts featuring your company's logo to sell more work.

FIA Fully Integrated Alignment



FIA streamlines the entire alignment process.

Communication links automate tasks once performed by the technician manually, eliminating time-consuming trips around the vehicle and to-and-from the console.



1



PATENTED

RX Scissor Lift console

- ✓ Raising the vehicle triggers the sensors to look for wheel targets
- ✓ Control PowerSlide® and Inflation Station settings on the lift console
- ✓ Store bar-code scanner and CodeLink tool near the vehicle to save steps



H *AlignLights turn on automatically at alignment height*

2



PATENTED

WinAlign® console

- ✓ Centralized control of entire system
- ✓ Communicate directly with lift to set tire pressure and automatically operate turnplates and slipplates
- ✓ Guide the technician through the alignment process



H *Measurements are taken automatically once the fourth target is installed*

3



PATENTED

PowerSlide® system

- ✓ Slipplates and turnplates automatically lock and unlock at appropriate times
- ✓ No more struggles with lock pins



H *Auto-locking turnplates and slipplates save trips around the vehicle*

4



PATENTED

Inflation Station

- ✓ Automatically inflate all four tires simultaneously
- ✓ Record starting and final pressure
- ✓ Hose recoils to keep work area clear



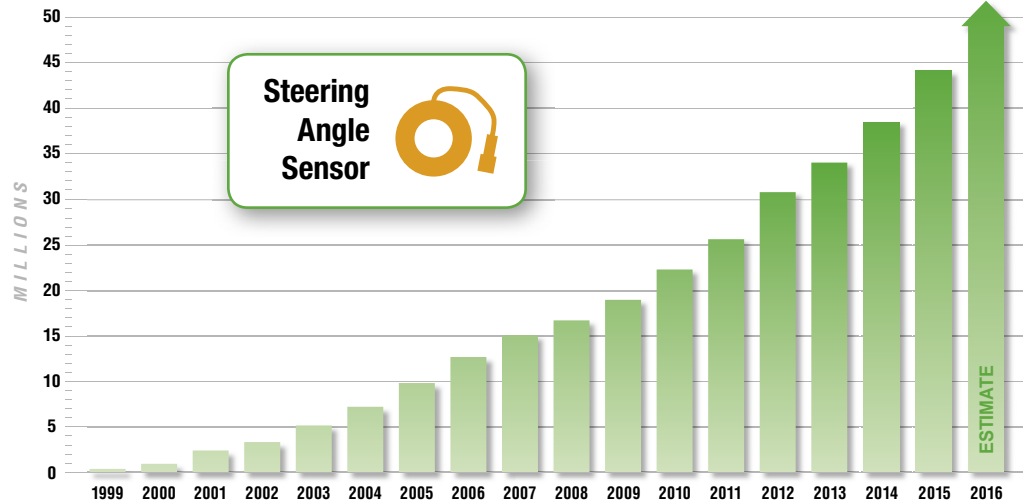
H *Software tracks before and after tire pressures for the customer's printout*

Hunter's Safety System Alignment: Over 50 million vehicles require Safety System Alignment... and growing!



Electronic Stability Control

- ✓ Since 2009, Hunter has supported electronic steering system resets as required by the OEM
- ✓ Several systems use electronic steering system output to determine the vehicle's travel direction

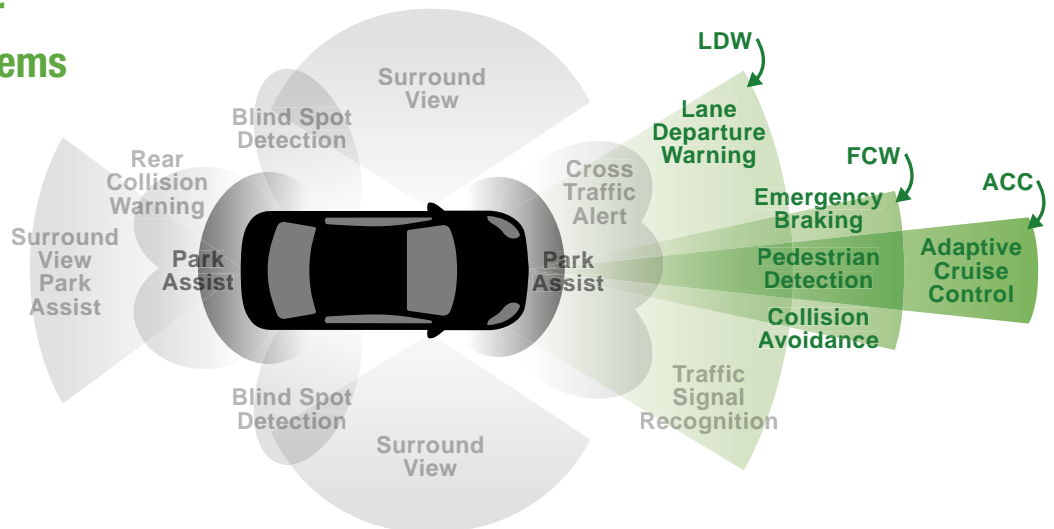


Source: Hunter Engineering Company research

A growing number of vehicles also require additional resets

Advanced Driver Assistance Systems

- ✓ Many vehicles are now equipped with ADAS
- ✓ Many systems require a calibration after wheel alignment
- ✓ Often require a short drive be completed as part of the calibration



Hunter's Safety System Alignment: The last step in alignment service



An increasing number of vehicles include advanced driver assistance systems (ADAS). In addition to a mechanical alignment, manufacturer's specifications often require a Safety System Alignment® on many vehicles equipped with ADAS Systems.

ADAS systems most likely to require reset

- ✓ Lane Departure Warning (LDW) - Camera-based
- ✓ Forward Collision Warning (FCW) - Radar-based
- ✓ Adaptive Cruise Control (ACC) - Radar-based

The only integrated, complete alignment procedure

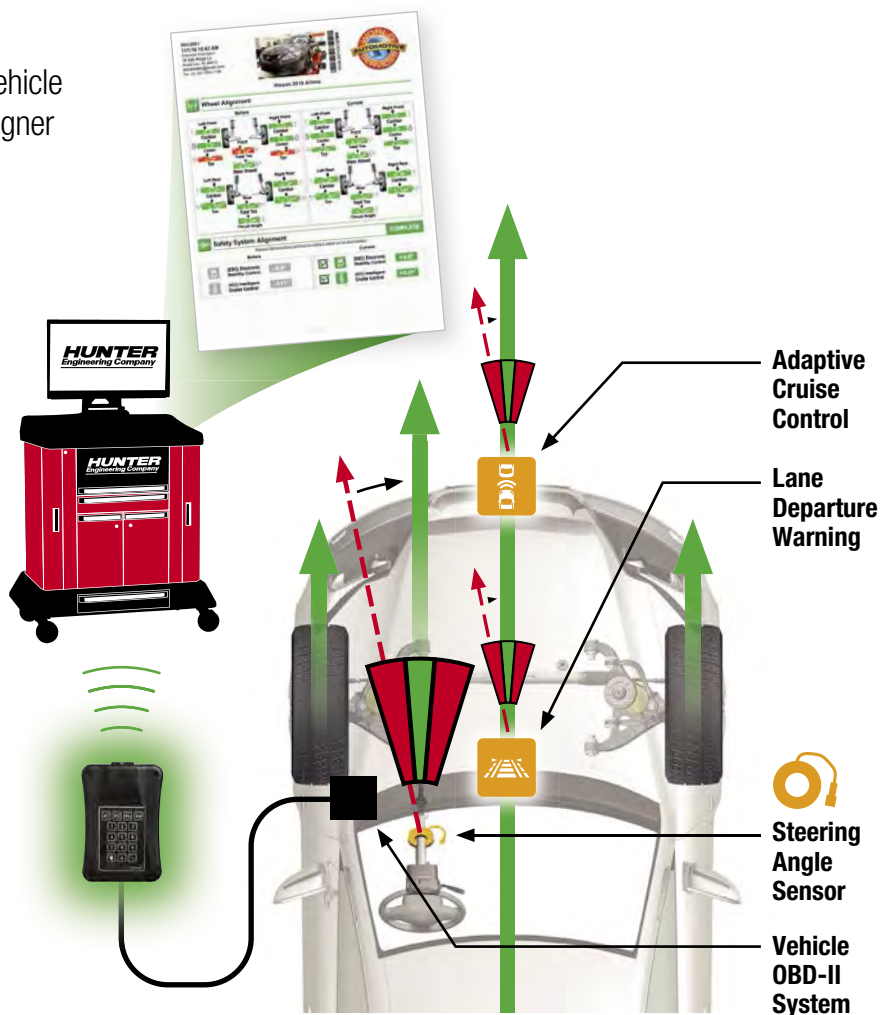


CodeLink's patented integration "links" the vehicle OBD-II system to the aligner

to align safety system related sensors to the vehicle's alignment geometry.

CodeLink® advantages:

- ✓ Integrated with Hunter WinAlign® systems
- ✓ Simple instructions shown on aligner screen
- ✓ Only one tool required
- ✓ Wireless communication with aligner
- ✓ Resets ADAS systems and other related sensors
- ✓ Alignment printouts document reset

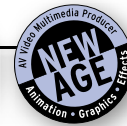


When it comes to award-winning software, WinAlign® is unmatched!

The importance of software...



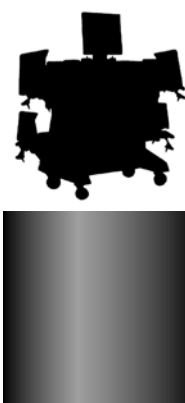
Over 30 years of experience and the largest R&D department in the undercar industry bring you the most profitable and productive software on the market.



- ▶ The **most extensive** vehicle information database for North America's 220 million vehicles.
- ▶ **Vehicle-specific** procedures guide your technicians with step-by-step instructions.
- ▶ **Patented and award-winning power tools** complete the work accurately the first time, every time.
- ▶ **WinAlign maximizes profit and productivity in your alignment bay.**



Ordinary systems simply present alignment readings



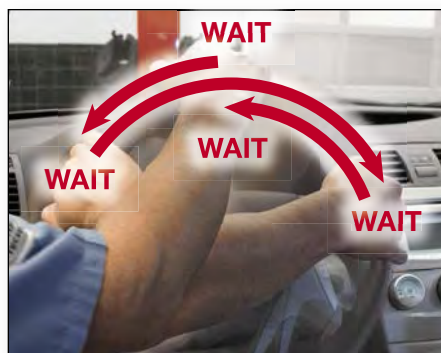
Ordinary camera systems simply speed up these readings



WinAlign maximizes profit and productivity in your alignment bay

New Faster Caster procedure!

- ✓ Eliminates wait times during caster steer
- ✓ Saves time and increases speed
- ✓ Reduces brake pedal depressor installation by 86%
- ✓ Reduces battery drain from brake light draw

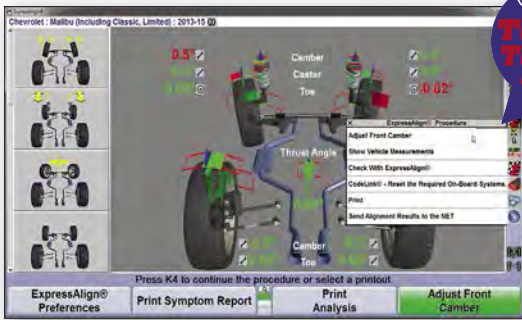


No more waiting for left, right, and center readings during caster steer

NEW



Steer left, right and back center



ExpressAlign®

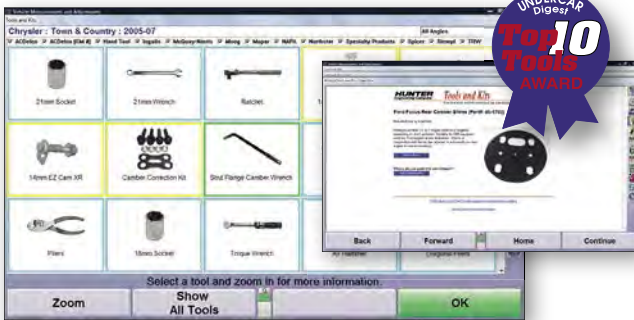
Perform every alignment with a streamlined procedure. ExpressAlign analyzes each job and presents the optimal action sequence with the minimum steps required.



WinToe®

Ensure a straight steering wheel every time without repeated adjustments or using a steering wheel holder.

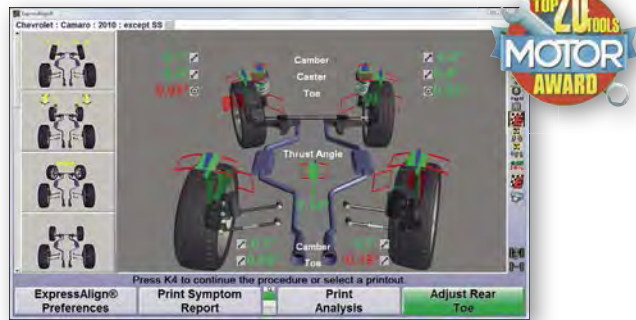
H *A timesaver on nearly every alignment*



Tools and Kits Database

Save trips back and forth to the tool box. Hunter presents all of the tools and aftermarket correction kits needed for each alignment.

H *Online ordering supported*



Virtual View®

See your alignment job in 3-D using real-time 3-D graphics. Used by experts and novices alike.

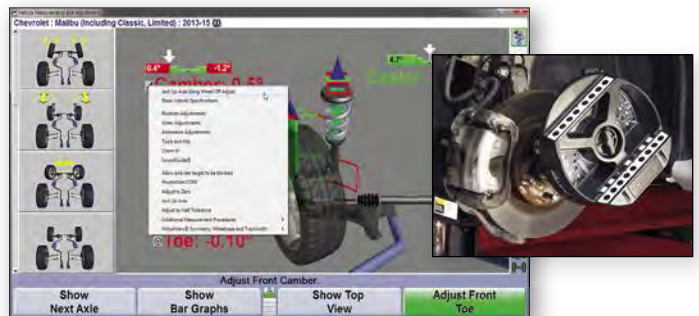
H *Every alignment can be shown in 3-D*



Control Arm Movement Monitor®

Cut adjustment times in half for front-shim, dual-cam or dual-slot vehicles. Step-by-step graphics let you get it right on the first try.

H *Over 60 million vehicles benefit*



Wheel-Off Adjustment

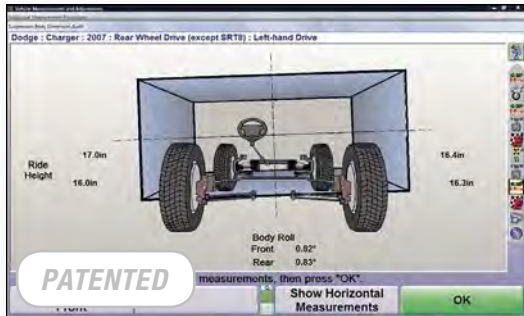
Speed the alignment process by making adjustments with the wheel removed.*

H *Available when you need it*

* For three-dimensional targets, both Wheel-Off Adjustment Kit and SCA Adaptor Kit 20-2664-1 is required.

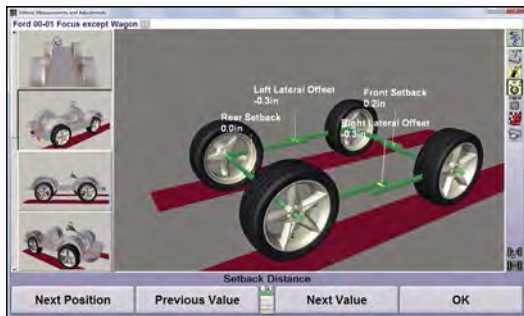
Take your alignment business to the next level!

Perform body shop and specialty alignments...



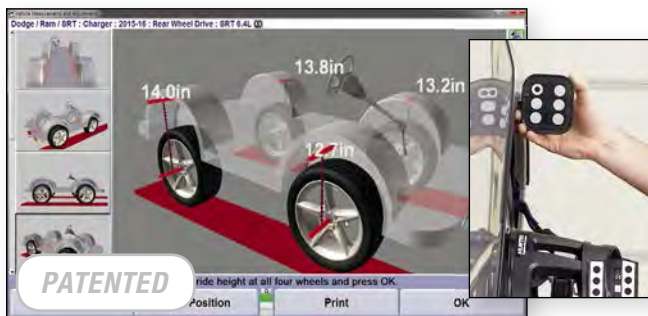
Suspension Body Dimension Audit

Quickly screen vehicles to determine alignability and collision repair needs.



Symmetry Angle Measurements

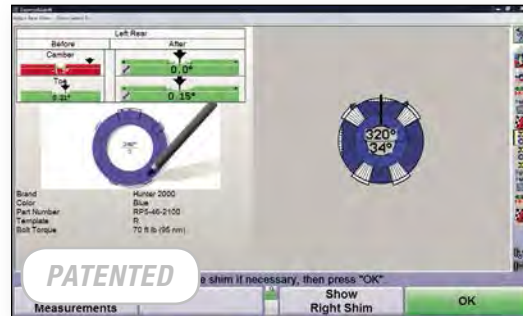
Instantly access symmetry angles and setback for your body shop customers.



Live Ride Height Adjustment

Measure and adjust ride height in real-time.

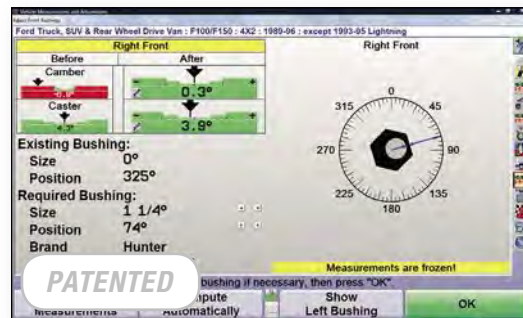
H Over 20 million vehicles require ride height measurement to complete alignment service



Shim-Select® II

Eliminate confusing shim charts and tables. Shim Select II quickly calculates and displays the template you need for proper shim installation.

H Over 30 million vehicles benefit



Automatic Bushing Calculator®

Calculate the proper bushing size and position adjustment without wasting time with a zero bushing.

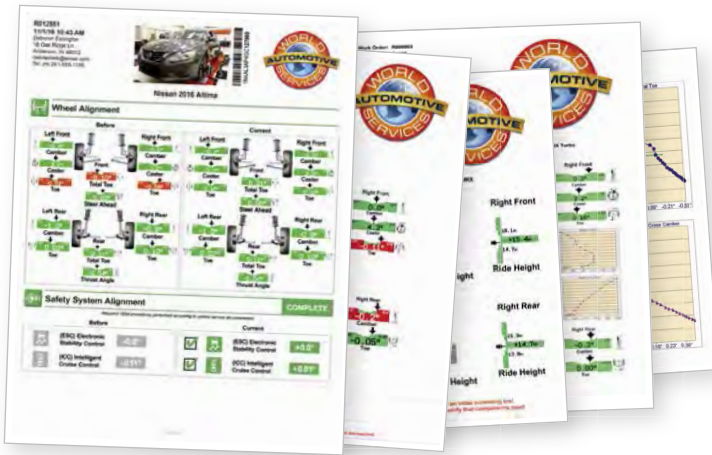
H Over 10 million light trucks and vans benefit



Point & Click Inspection Photos

5,000+ vehicle-specific photos and illustrations to assist your shop

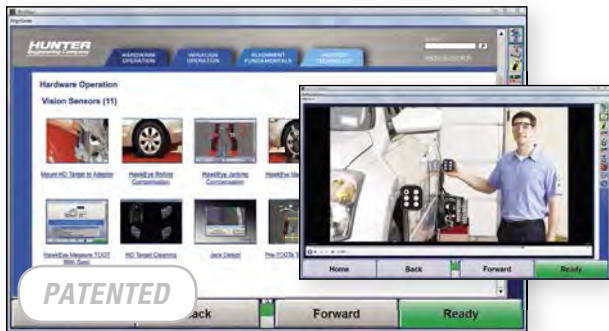
Help your customers make informed decisions!



WinAlign® printouts help sell work

Explain needed parts and repairs and show completed work to customers using detailed, color-coded printouts.

H Clear and detailed printouts help you communicate and build rapport with your customers and sell more alignments



WinAlign® Video Library

400+ videos and animations cover all aspects of wheel alignment today.



TPMSpecs®

TPMSpecs pulls together **over 100** TPMS procedures into a simple, yet comprehensive, user-friendly format for the technician.



The latest specs available online

Download, access and communicate alignment service information through the Internet.



Enhance your point-of-sale performance

Provide front-shop personnel with quick, convenient access to vehicle-specific undercar information to explain and sell service.

Use your aligner to perform Quick Checks!



Use detailed printouts featuring your company's logo to sell more work

- ✓ Total toe front and rear
- ✓ Camber on all wheels
- ✓ Tire wear indication
- ✓ Identifies vehicles that require Safety System Alignment



20-2813-1 CodeLink*

Retrieves emission codes. Wirelessly transfers important vehicle information to console.



20-2781-3 Battery Health*

Tests battery to OEM specs. Sends results to console wirelessly in 10 seconds.



20-2782-1 Tire Tread Depth*

Quick and easy tire wear check. Conditions transmitted to console automatically.



Quick Tread*

Creates a 3D model of the tire and can be easily added to existing Quick Check® inspection systems.

*Requires WinAlign® 14.1 software or higher in Quick Check® mode.

Choose the right alignment console for your shop!

WinAlign WA600 Premium consoles

Industry-leading hardware	Processor	3.70 GHz Intel® Core™ i3 (or greater)
	Memory	4 GB of DDR4 RAM
	Hard drive	240 GB Solid State Drive (or greater)
	DVD-RW/CD-RW combo drive	Standard
	Monitor class	24" or 27" widescreen LCD (32" available on large console)
	Wired & wireless network module	Standard
	Operating system	Windows 10 IoT Enterprise
	Three-dimensional target (TD Target™) support	Standard
	Large console with drawers	Standard (with WA68X consoles)
	Compact console with printer drawer	Standard (with WA67X consoles)
	Console-top storage and charging station	Standard (with mobile WA600 consoles)
	Bar Code Reader	Standard



Large console



Compact console



Wall-mount console

Award-winning productivity tools	<i>PATENTED</i> Award-winning WinAlign® software	Standard
	<i>PATENTED</i> Vehicle Info Database (30+ yrs)	Standard (2 years free updates)
	<i>PATENTED</i> Real-time specs delivered by web	WebSpecs® (2 years standard)
	<i>PATENTED</i> Steering system reset (integrated)	Yes (with standard CodeLink™)
	Quick Check	Standard
	<i>PATENTED</i> Live Ride Height adjustment	Standard
	<i>PATENTED</i> Fully Integrated Alignment	Yes (FIA-equipped lift required)
	<i>PATENTED</i> Modified vehicle alignment	Yes (with standard WinAlign Tuner)
	<i>PATENTED</i> Vehicle inspection with photos	Standard
	<i>PATENTED</i> Tools & Kits	Videos and Photos
	Equipment video help/assistance	Standard
	<i>PATENTED</i> ShopResults (via ShopResults.NET™)	2 years standard
	<i>PATENTED</i> Training and productivity aids	4,000+ photos, 1,600+ illustrations 400+ videos & animations

Choose the right sensor package for your shop!



Fixed-column configurations fit most service bay applications.



Motorized and manual movable-camera configurations provide a full range of vertical travel for additional lift height.



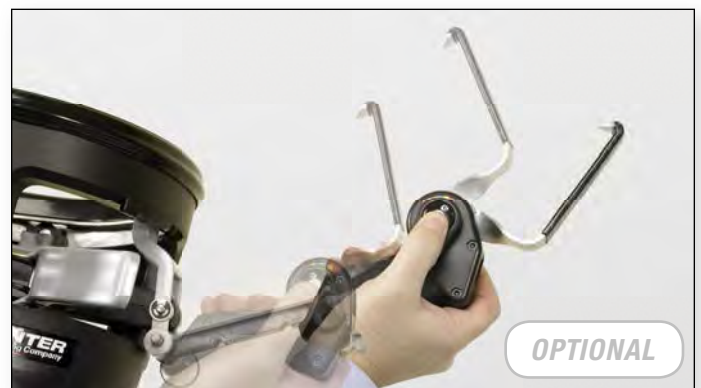
Cabinet-mounted configuration is mobile to service multiple alignment bays and provides a full range of travel for additional lift height.



Wall- and ceiling-mount configurations are perfect when space is at a premium.



Floor-mounted overhead configurations are ideal for drive-through bays or to accommodate unique applications.



One set of adjustable clamp arms covers the same clamping range as standard multi-arm kit.

HawkEye Elite® alignment sensor and adaptor specifications



Specifications	<i>PATENTED</i>	No metal-to-metal contact with wheel	Standard
		Weight of assembly	6 lbs.
		Profile of assembly	9 inches
		Installation time per wheel	5 seconds
		Rolling compensation style	Forward
		Camera resolution	2,608 x 1,952 (pixels per camera) 20,000,000 (pixels total)
		Track width	80 inches
		Wheelbase	210 inches
		Distance to wall*	66 - 107 inches
		Suggested distance*	99 inches
		Short-bay distance (see site info)*	66 inches
Secondary Measurements		S.A.I. and included angle	✓
		Setback	✓
		Maximum steering angle**	To lock
	<i>PATENTED</i>	Live ride height***	✓
		Wheelbase difference	✓
		Track width difference	✓
		Tread width difference	✓
		Lateral offset	✓
		Rear setback	✓
		Axle offset	✓
Body Measurements	<i>PATENTED</i>	SBDA	✓
	<i>PATENTED</i>	Body angle	✓
	<i>PATENTED</i>	Body wheel offset & setback	✓
	<i>PATENTED</i>	Body roll**	✓
Adjustments	<i>PATENTED</i>	Way Up Way Out WinToe**	✓
	<i>PATENTED</i>	Wheel-Off Adjustment	Optional

* Refer to site requirements for exact bay specifications.

** Requires standard wide-angle target extensions.
*** Requires Ride Height targets. Standard with WA400 consoles, optional with WA300 consoles.

Increase revenue with Hunter merchandising!

Introduce your wheel alignment capabilities and educate your customers with great Point-of-Sale options from Hunter.



Sell more alignments with clear and informative printouts

Front	Center	Right
-0.1°	0.0°	0.0°
4.3°	4.3°	4.3°
0.00°	-0.44°	-0.44°
Rear	Center	Right
-0.7°	-0.2°	-0.2°
0.02°	0.05°	0.05°
-0.03°	0.04°	0.04°
Four Wheel	Turner Angle	



STANDARD

Customized column cap

Make your alignment bay stand out. Hunter's lighted sensor column cap can be customized with your logo or shop name. (available for most sensor configurations)

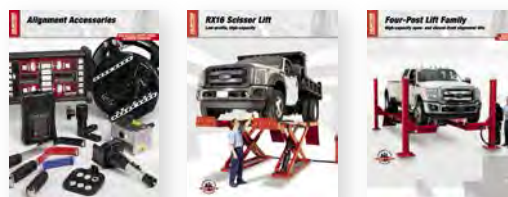


ROTUNDA

Contact your Field Service Engineer or Rotunda Area Sales Manager

1.800.ROTUNDA

www.OneRotunda.com



Be sure to check out other Hunter literature for more quality products from Hunter Engineering.

HUNTER
Engineering Company

